

REPORT

SUBJECT: ACCOMMODATION REVIEW (ST. IGNATIUS CATHOLIC SCHOOL AND ST. PAUL CATHOLIC SCHOOL) – SCHOOL BOUNDARY REPORT

SUBMITTED TO: BOARD OF TRUSTEES

DATE OF MEETING: October 26, 2004

PREPARED BY: KAREN DOLSON, Supervisor of Planning and School Support Services

PRESENTED BY: JIM MCKENZIE, Associate Director – Corporate Services

SUBMITTED BY: MARGARET NELSON, Director of Education

REPORT:**ACCOMMODATION REVIEW (ST. IGNATIUS CATHOLIC SCHOOL AND ST. PAUL CATHOLIC SCHOOL) – SCHOOL BOUNDARY REPORT**

BACKGROUND:

When reviewing a school for potential closure, Board policy 7.4 requires the following:

- A report and analysis outlining boundary changes that would be required if the school is consolidated or closed.

Statistical information presented in this report is based on the entire current boundary area for St. Ignatius Catholic School, Bothwell being directed to St. Paul Catholic School, Thamesville. The south boundary of St. Paul Catholic School has also been adjusted slightly with St. Michael Catholic School in Ridgetown to reflect current boundary practices.

In addition, Catholic School boundaries have been assigned to the “gray area” (Appendix A) in Dawn/Euphemia, Brooke-Alvinston and Enniskillen Townships. This will not affect the school designation for students currently residing in this area (Appendix B).

Enrolment projections provided previously in the Enrolment Projections Report include all students currently attending St. Paul and St. Ignatius Catholic Schools. This includes three students at St. Paul who reside outside of the current boundaries and three students at St. Ignatius who reside outside of the jurisdiction of the Board. These families would be required to provide their own transportation to the consolidated school in Thamesville or meet a bus at an existing stop as they currently do.

The residential distribution of students currently attending St. Ignatius Catholic School (Appendix C and D) in grades JK-7 shows that 29 of the 60 students (48.33%) reside within the Town of Bothwell and would require transportation to Thamesville. The other half of the students are already in the rural area and are currently being bussed. St. Paul Catholic School is already a very rural school with 83.65% of the students being transported from the rural area. Only 17 students (16.35 %) reside within the Town of Thamesville (Appendix E and F).

PROPOSED BOUNDARY CHANGES:

- 1) That Catholic school boundaries be assigned to the “gray area” in Dawn/Euphemia, Brooke-Alvinston and Enniskillen Townships by expanding the current boundaries along Aberfeldy Line (inclusive of the north side) for the following schools (Appendix G):

SACRED HEART CATHOLIC SCHOOL, PORT LAMBTON – East boundary is currently the west side of Mandaumin Road. This will be expanded to include both sides of Mandaumin Road. The north boundary will be adjusted to exclude Bickford Line rather than splitting the two sides of the road.

ST. MICHAEL CATHOLIC SCHOOL, TURNERVILLE – North boundary west of Hale School Road to be expanded north from Kent Line to Aberfeldy Line (exclusive).

REPORT:**ACCOMMODATION REVIEW (ST. IGNATIUS CATHOLIC SCHOOL AND ST. PAUL CATHOLIC SCHOOL) – SCHOOL BOUNDARY REPORT**

ST. PAUL CATHOLIC SCHOOL, THAMESVILLE – North boundary to be extended from Hale School Road north to Aberfeldy Line (exclusive).

ST. IGNATIUS CATHOLIC SCHOOL, BOTHWELL – North boundary to be extended to Aberfeldy Line (exclusive).

ST. PHILIP CATHOLIC SCHOOL, PETROLIA – South boundary to be extended to Aberfeldy Line (inclusive).

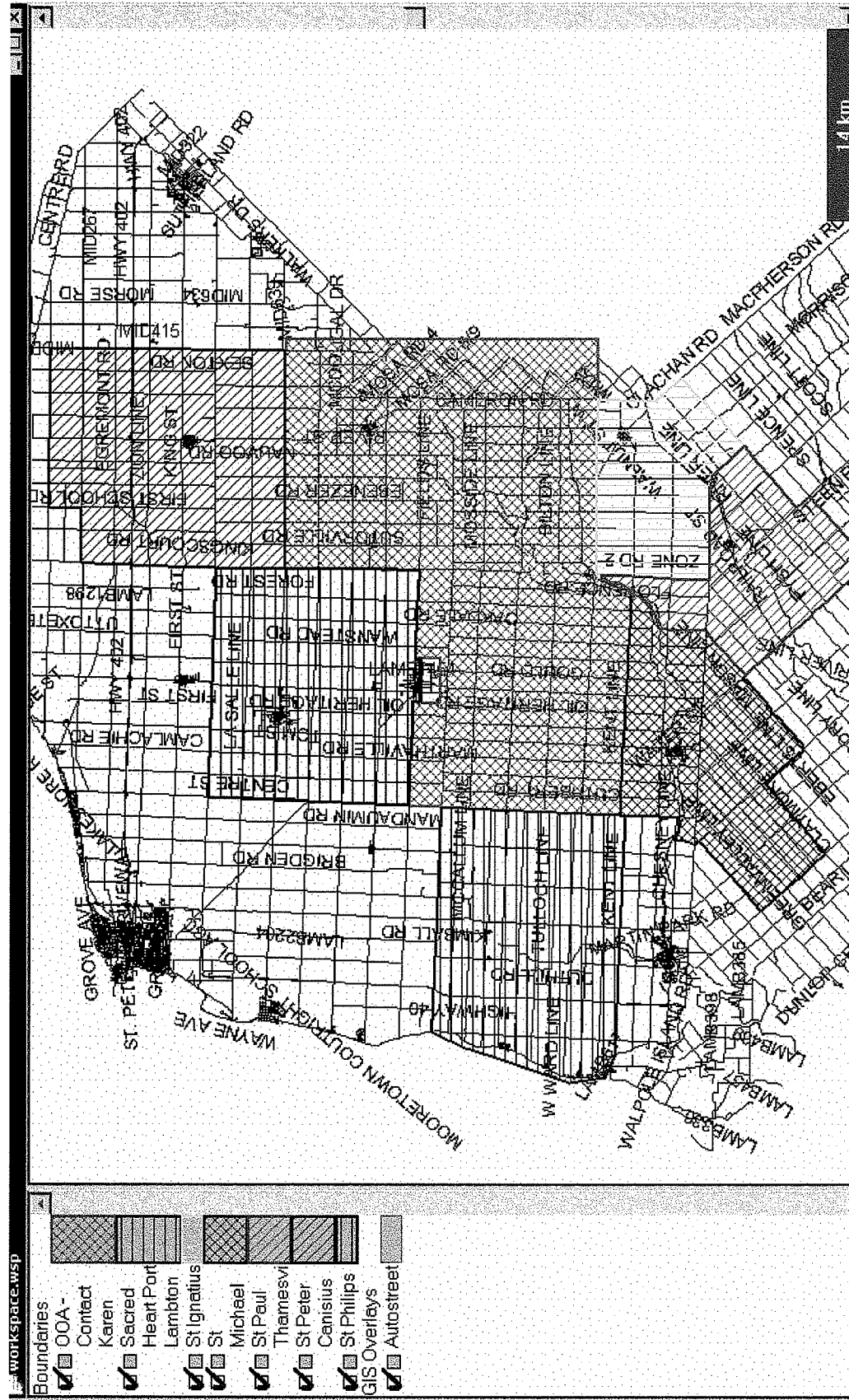
ST. PETER CANISIUS CATHOLIC SCHOOL, WATFORD – South boundary to be extended to Aberfeldy Line (inclusive).

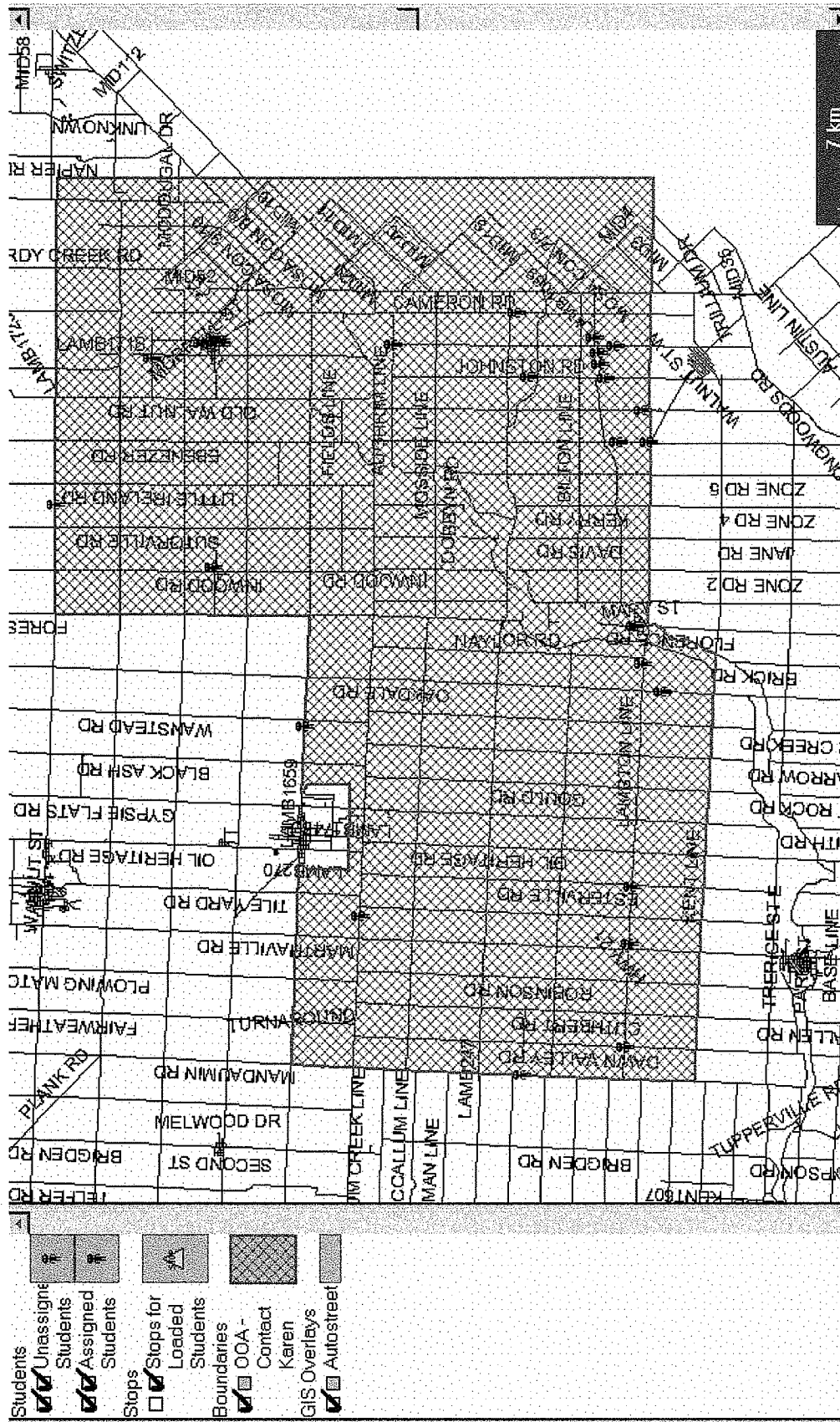
- 2) That the north boundary of St. Michael School, Ridgetown be extended to include both sides of Selton Line from Clachan Road to Kent Bridge Road (Appendix H).
- 3) That the current boundary for St. Ignatius Catholic School in Bothwell be consolidated with the current boundary for St. Paul Catholic School in Thamesville should the two school communities be consolidated in Thamesville (Appendix I).

RECOMMENDATION:

That the St. Clair Catholic District School Board receive the report: *Accommodation Review (St. Ignatius Catholic School and St. Paul Catholic School) – School Boundary Report*, October 26, 2004 for information.

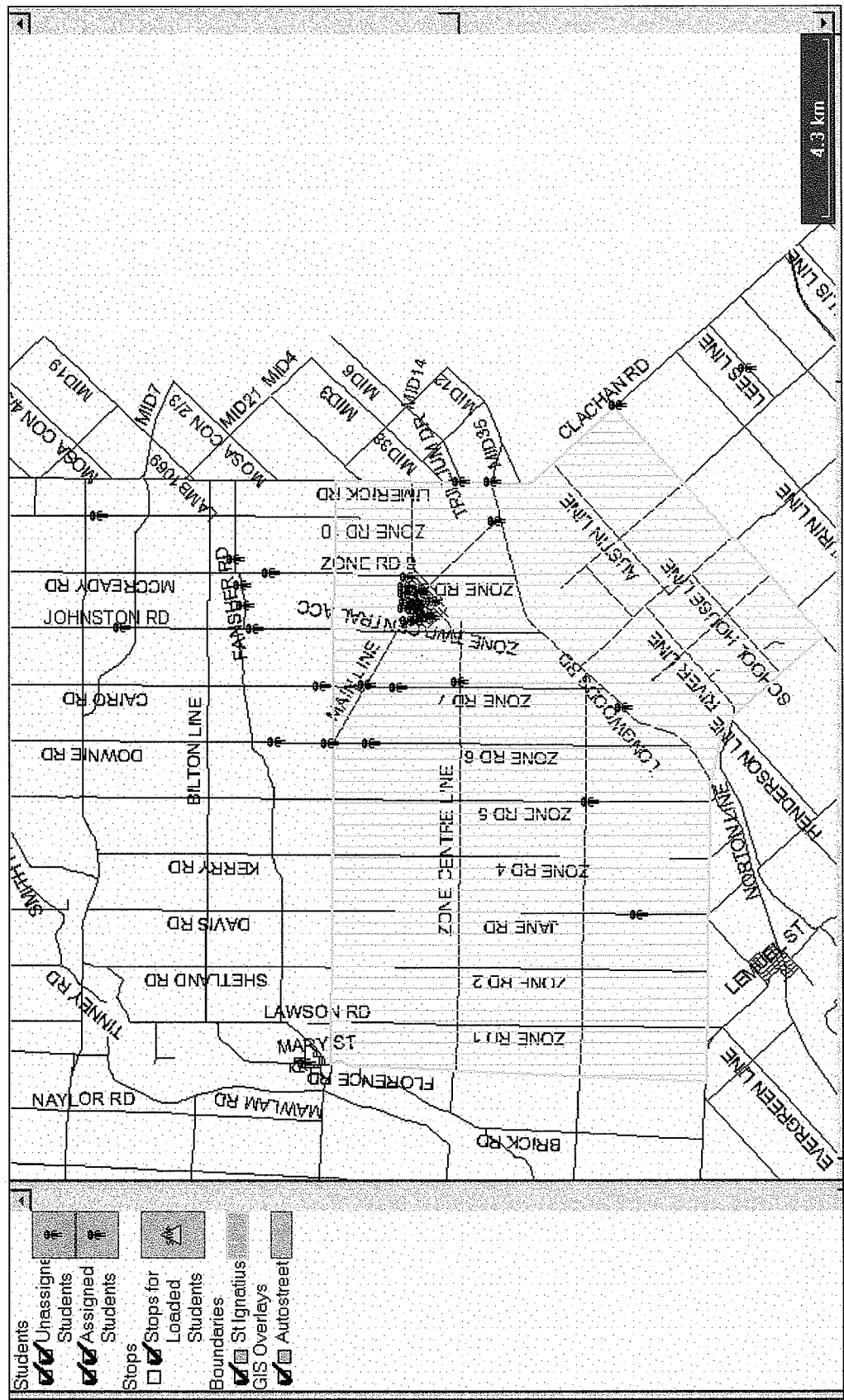
CURRENT SCHOOL BOUNDARIES SURROUNDING “GRAY AREA”



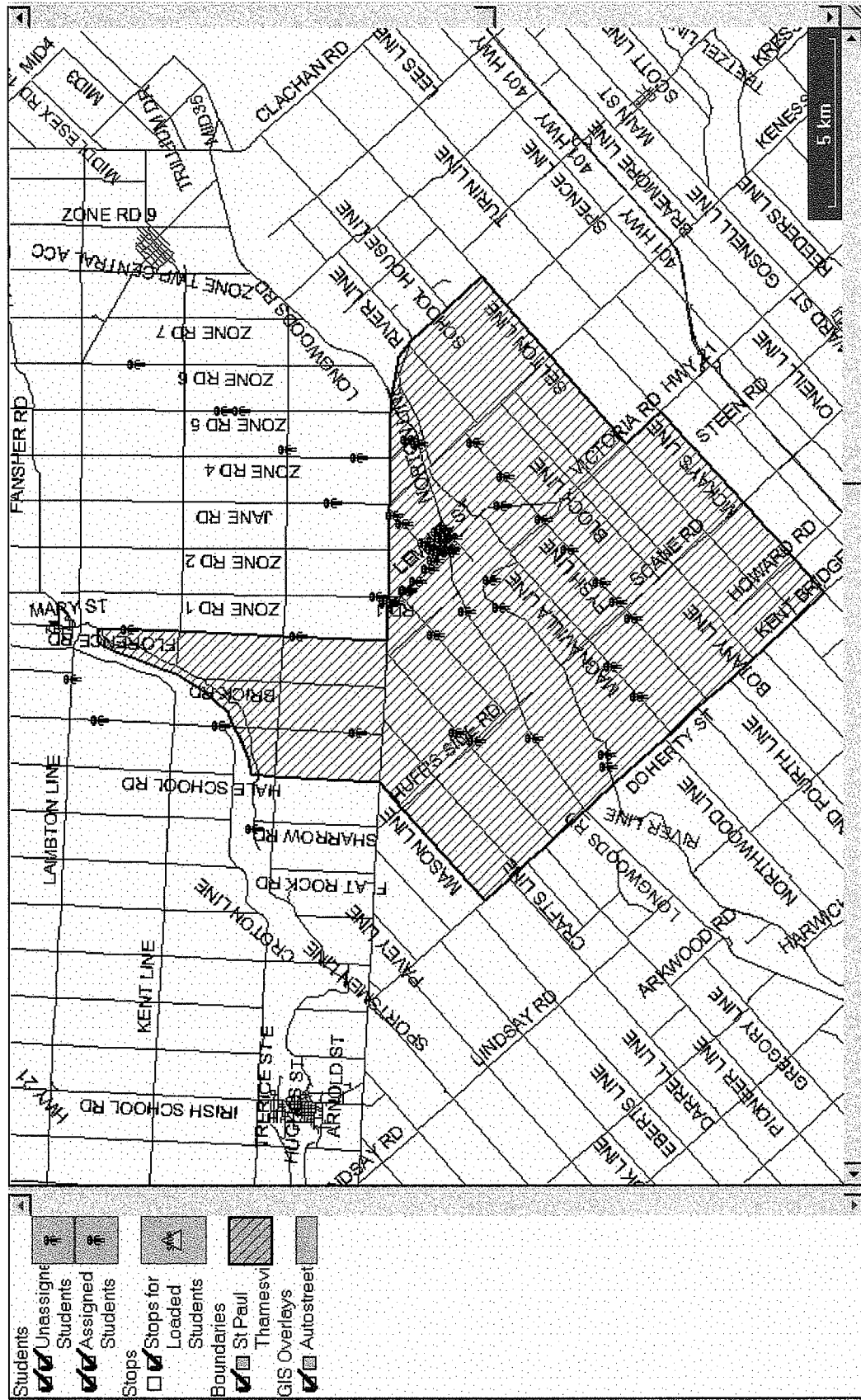


RESIDENTIAL DISTRIBUTION OF STUDENTS ATTENDING ST. IGNATIUS CATHOLIC SCHOOL 2004-05						
CURRENT GRADE	BOTHWELL	ZONE	DAWN- EUPHEMIA	ORFORD	OUT OF COUNTY	TOTALS
JK	3		1			4
SK	3	1	3			7
1	2	1		1		4
2	3	1	2		1	7
3	4	2	2	1		9
4	5	3	2			10
5	3		2	1		6
6	2	1	2	1	2	8
7	4		1			5
	29	9	15	4	3	60
	48.33%	15.00%	25.00%	6.67%	5.00%	

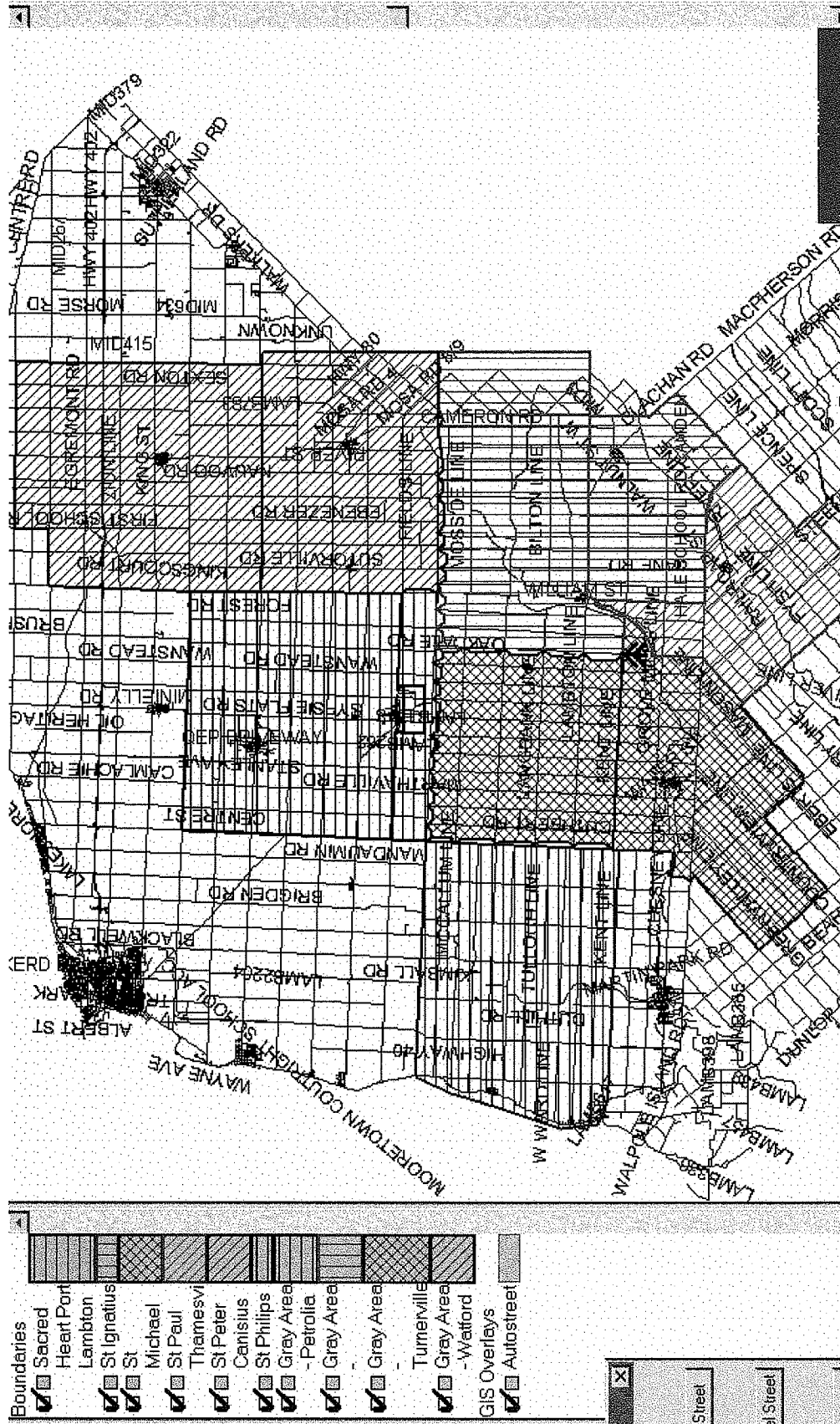
STUDENTS ATTENDING ST. IGNATIUS CATHOLIC SCHOOL, BOTHWELL – 2004-05



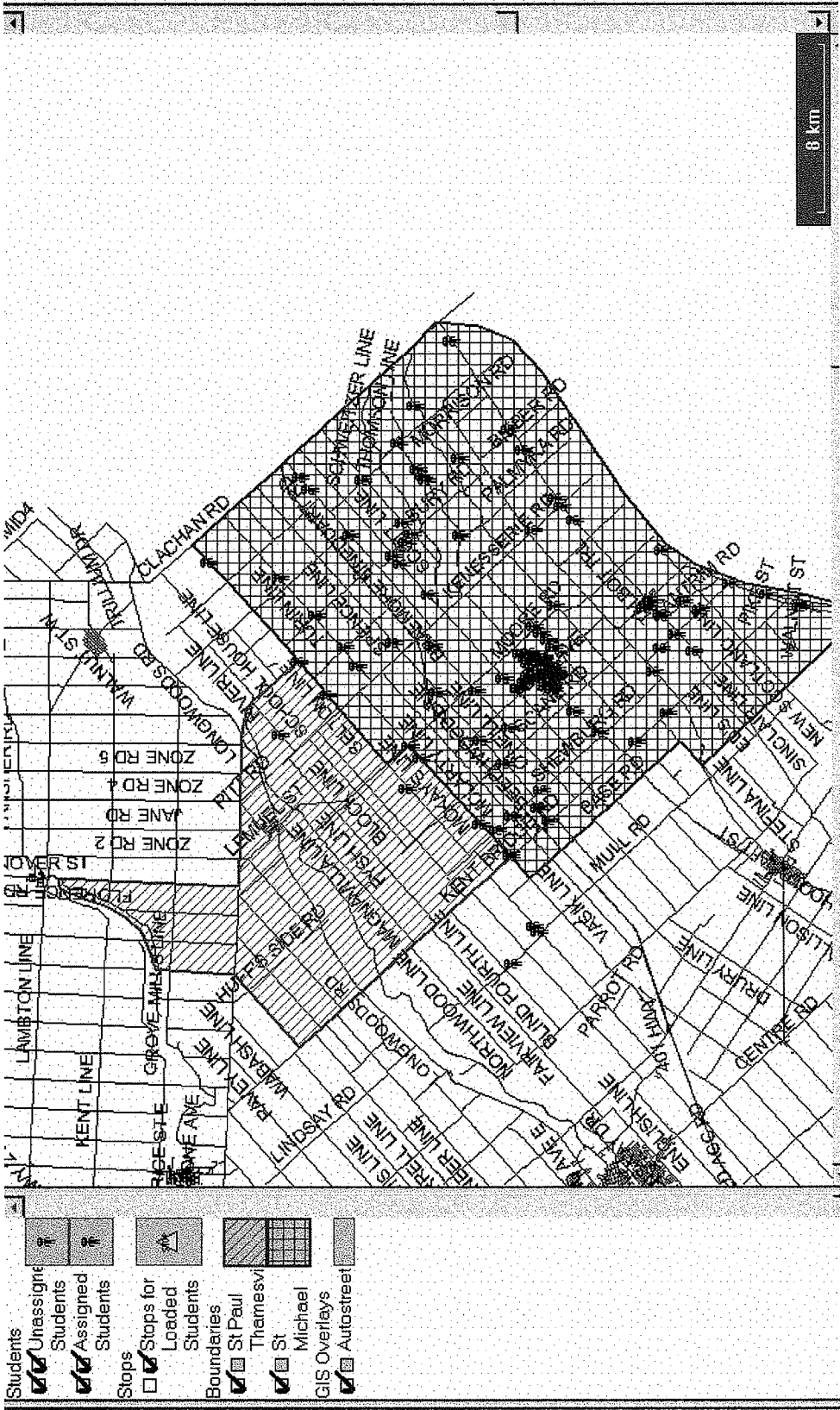
RESIDENTIAL DISTRIBUTION OF STUDENTS ATTENDING ST. PAUL CATHOLIC SCHOOL 2004-05							
CURRENT GRADE	THAMESVILLE	CAMDEN	ZONE	DAWN- EUPHEMIA	HOWARD	OUT OF BOUNDARY	TOTALS
JK	4	6	4	1	1		16
SK	1	7	2		2	1	13
1	1	5	3		3		12
2	1	2	3		3		9
3	3	3	4		1		11
4	2	2	1	1	2	1	9
5	2	4	2	1	5	1	15
6	1	4		1	1		7
7	2	5	4		1		12
	17	38	23	4	19	3	104
	16.35%	36.54%	22.12%	3.85%	18.27%	2.88%	



PROPOSED NEW BOUNDARY AREAS



STUDENTS ATTENDING ST. MICHAEL CATHOLIC SCHOOL, RIDGETOWN



PROPOSED BOUNDARY AREA AND CURRENT STUDENTS
FOR THE CONSOLIDATED ST. PAUL/ST. IGNATIUS SCHOOL AREA

