



St. Clair Catholic DSB Accommodation Review

South Sarnia Planning Area

- **St. Benedict Catholic School**
- **St. Margaret Catholic School**
- **St. Peter Catholic School**
- **St. Therese Catholic School**



Agenda

- Overview of the following areas:
 - Financial
 - Demographics
 - School Staffing
 - Facilities
 - Student Transportation



Financial Overview



Financial Overview

- Board relies on the Province for approximately 99.5% of its funding
- Operating revenues generated by the Ministry funding model are a direct function of student enrolment
- As enrolment declines, so does revenue
- Current projections indicate that enrolment will continue to decline in our district for at least the next 5 or 6 years



Financial Overview

- Declining enrolment remains our biggest financial challenge
- The Board currently has more pupil places than it needs and this will continue to increase as enrolment declines
- Majority of the Board's schools were originally constructed more than 40 years ago
- As schools age, maintenance costs increase



Financial Overview

- The Board must continue to be efficient and effective in its operations
- Need to be fiscally responsible and accountable in our efforts to provide the highest quality programs and educational environment possible for our students



Demographics Overview



Definitions

FTE (full-time equivalent enrolment)

The count of students is based on the percentage of time they attend school. A pupil enrolled in junior kindergarten or kindergarten is therefore counted as .50 or half-time.

Ministry grant calculations and the assignment of staff to schools are based on the FTE enrolment.



Definitions

OTG (Ministry On The Ground Capacity)

Number of pupil places available in a school.

Loading factors to calculate elementary capacity:

- JK/SK Classroom - 20

- Grade 1-8 Classroom – 23

- Special Education Rooms – 9

- General Instructional Space (approx. 400 to 700 sq ft) – 12

A space with an area between 700 and 850 sq. ft. would be considered a classroom, regardless of whether it is being used for regular instruction or for other purposes.

There are 0 pupils places associated with gymnasiums, libraries, child care centres or temporary accommodation such as portables.



Demographic Trends

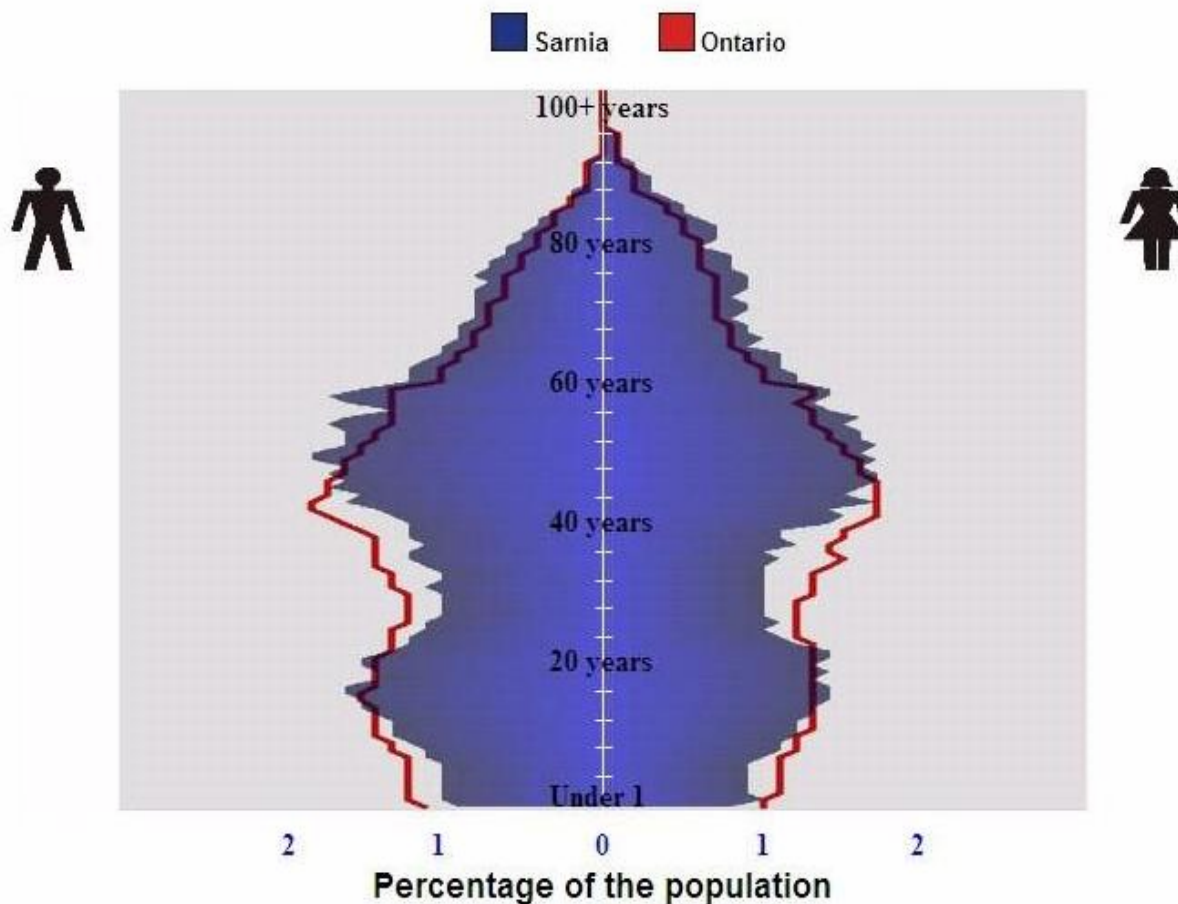
Studying demographic trends can better prepare us for changes before they occur and help us adjust to them once they have taken place.

- Baby Boom – born 1947 to 1966
- Baby Bust – born 1967 to 1979
- Baby Echo – born 1980 to 1995



2006 Census - Age and sex population comparisons

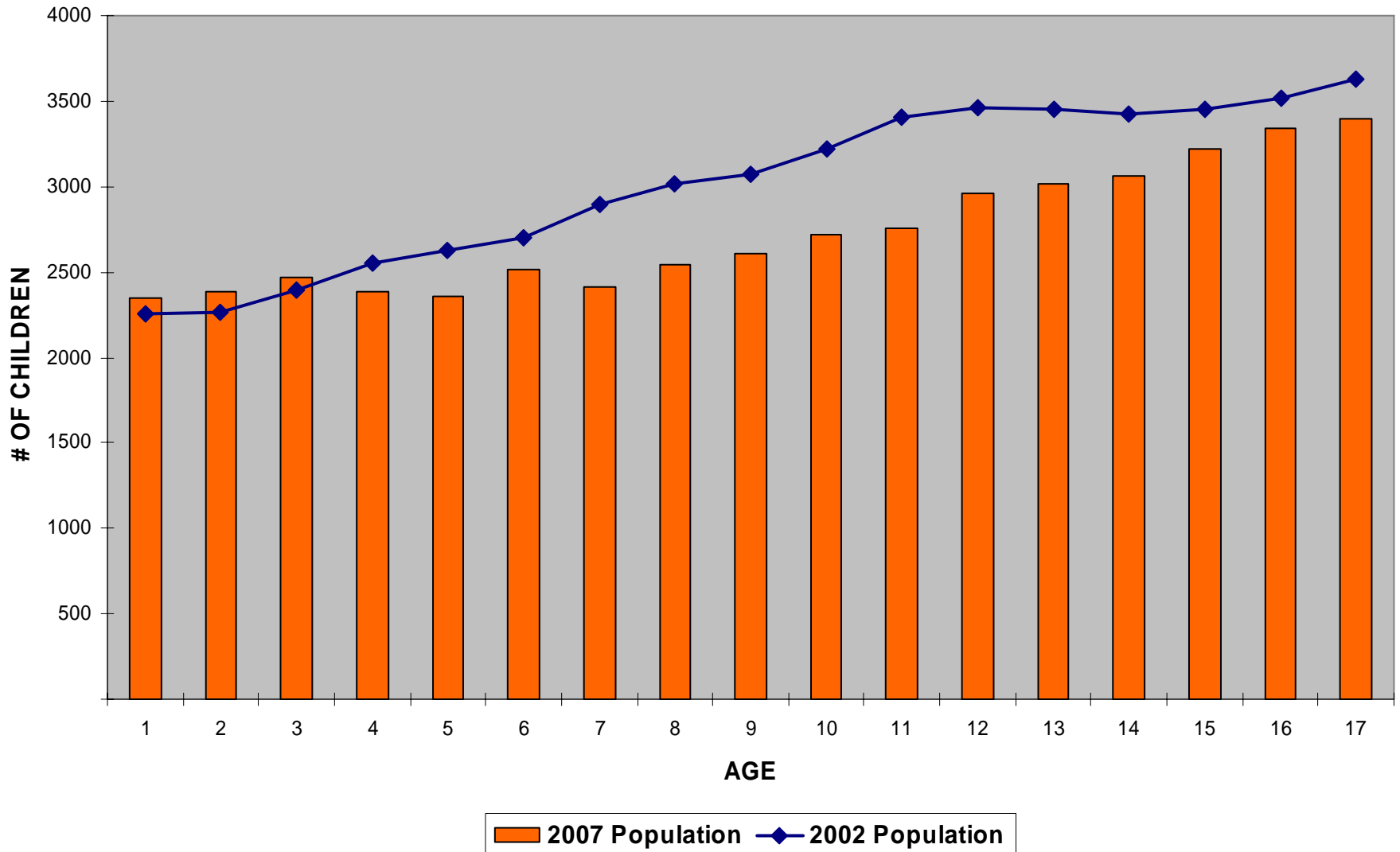
To compare the population distributions by years of age and sex for two different areas (Canada, provinces and territories, census metropolitan areas and census agglomerations), select the areas of interest from the drop-down menus below.



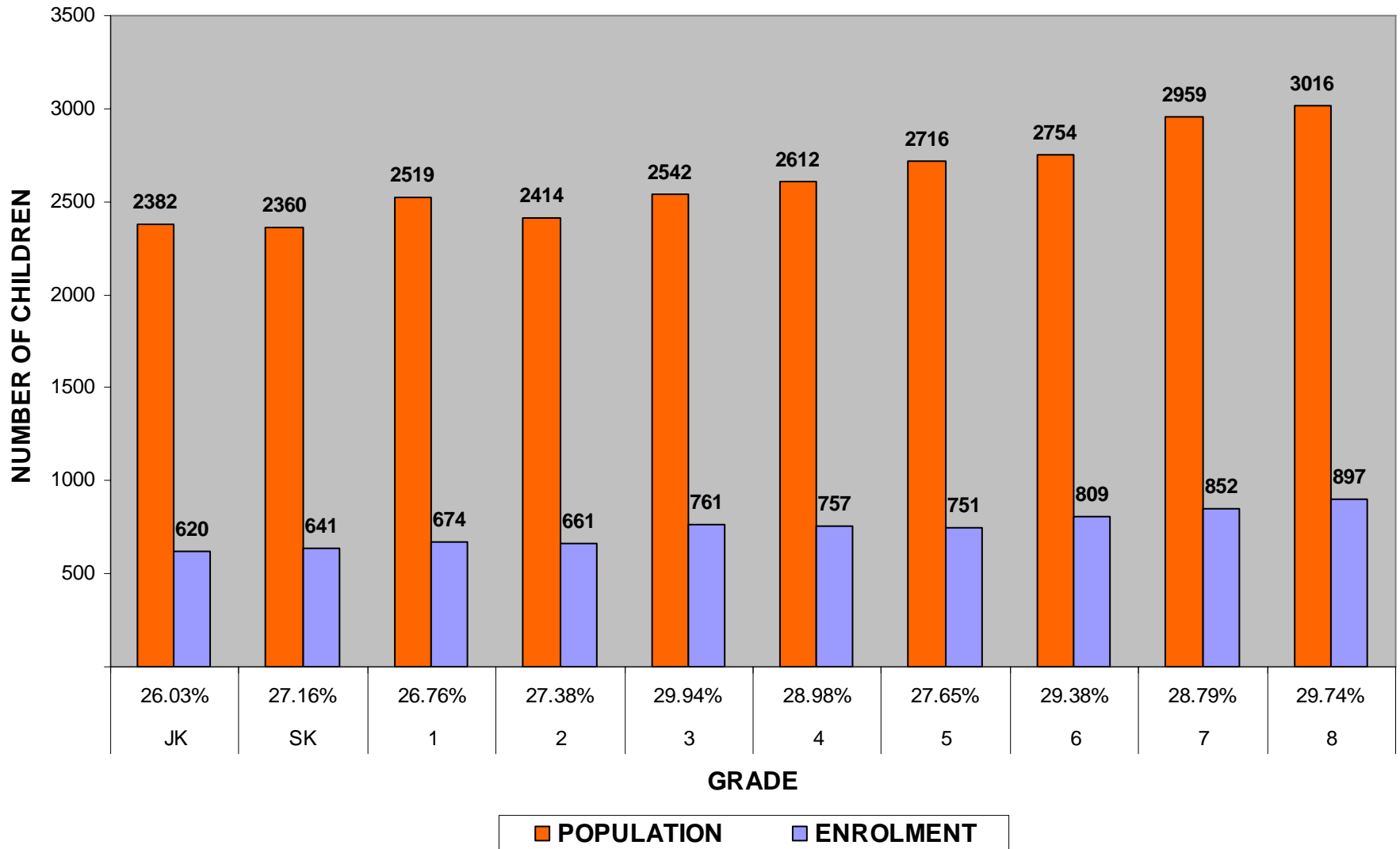
Source: Statistics Canada, 2006 Census of Population.

[Age \(123\) and Sex \(3\) for the Population of Canada, Provinces, Territories, Census Metropolitan Areas and Census Agglomerations, 2001 and 2006 Censuses - 100% Data - Catalogue no. 97-551-XWE2006009.](#)

ST. CLAIR CATHOLIC DSB JURISDICTION - POPULATION BY AGE



ST. CLAIR CATHOLIC DSB - PARTICIPATION RATES





Enrolment Projection Methodology

Future JK enrolment is calculated by increasing or decreasing the current JK enrolment based on the hospital birth rate in Sarnia-Lambton for corresponding years.

2004-05 – 976 births – 4.3% increase – affects 2008-09 JK

2005-06 – 912 births – 6.6% decrease – affects 2009-10 JK

2006-07 – 950 births – 4.2% increase – affects 2010-11 JK

JK enrolment is maintained at the 2010-11 level for future projections

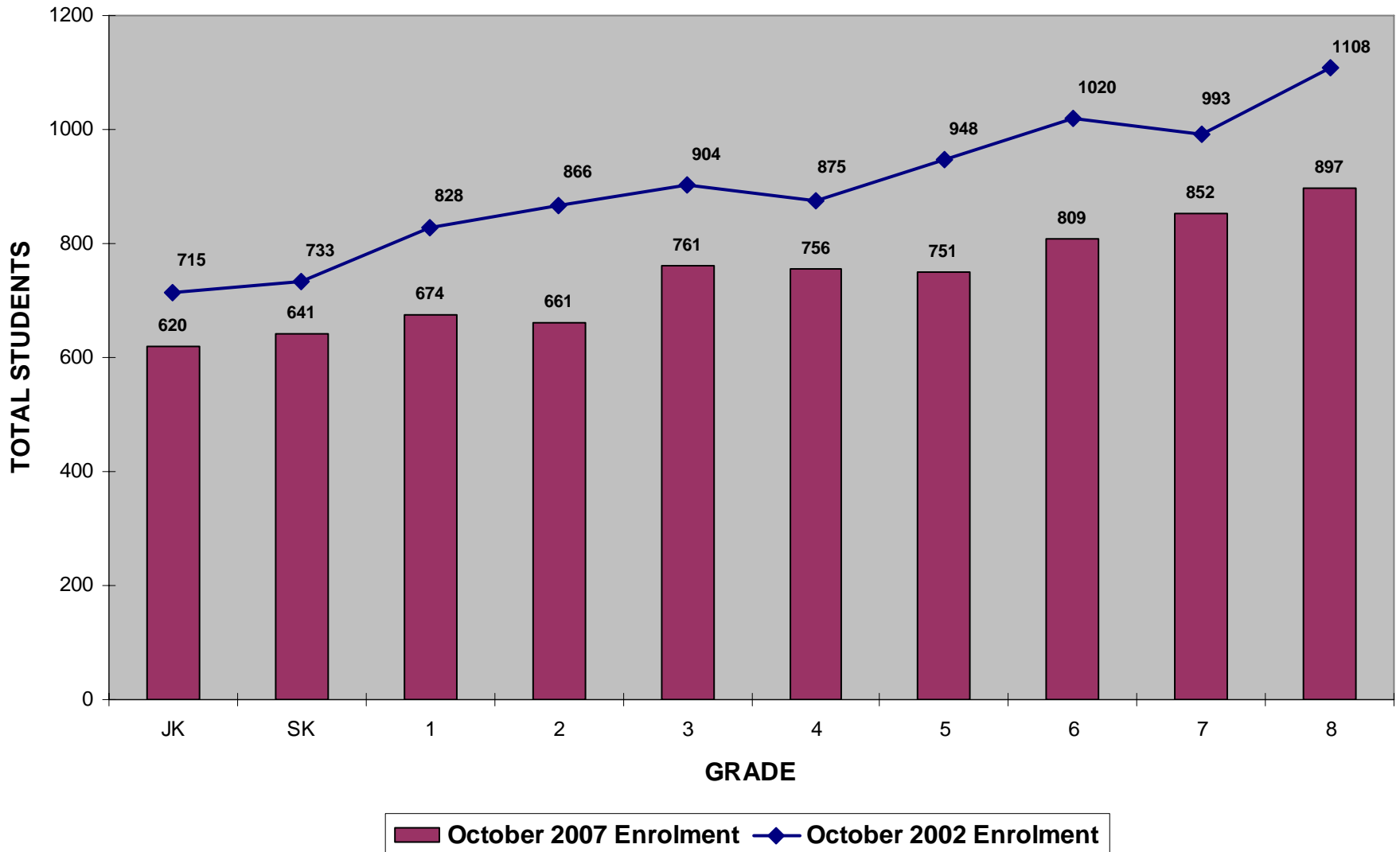


Enrolment Projection Methodology

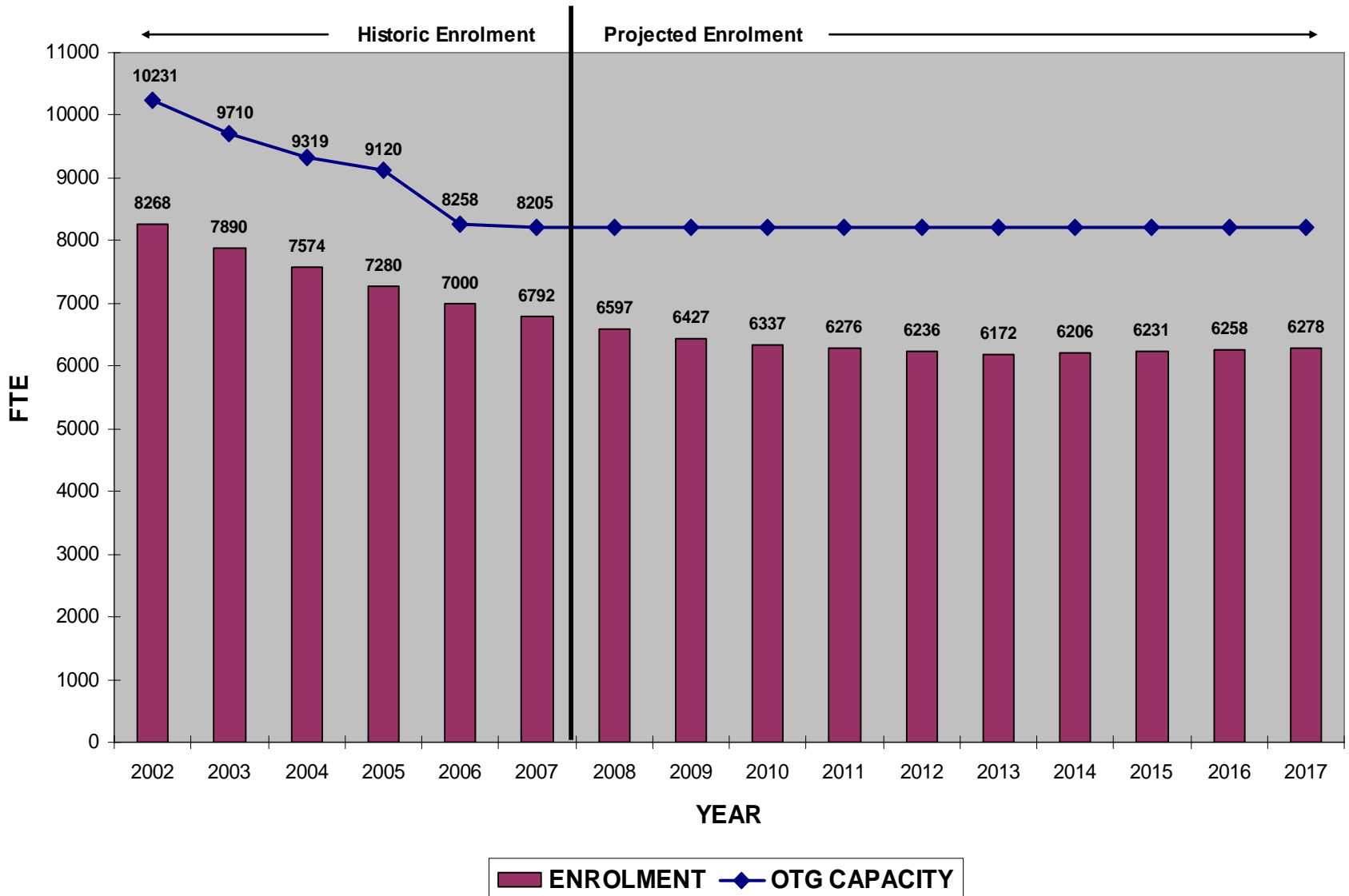
Projected enrolment in SK to grade 8 is calculated based on the 3-year average **student progression rate** for each school.

(Student Progression Rate - ratio of students enrolled in the current grade to enrolment in the previous grade)

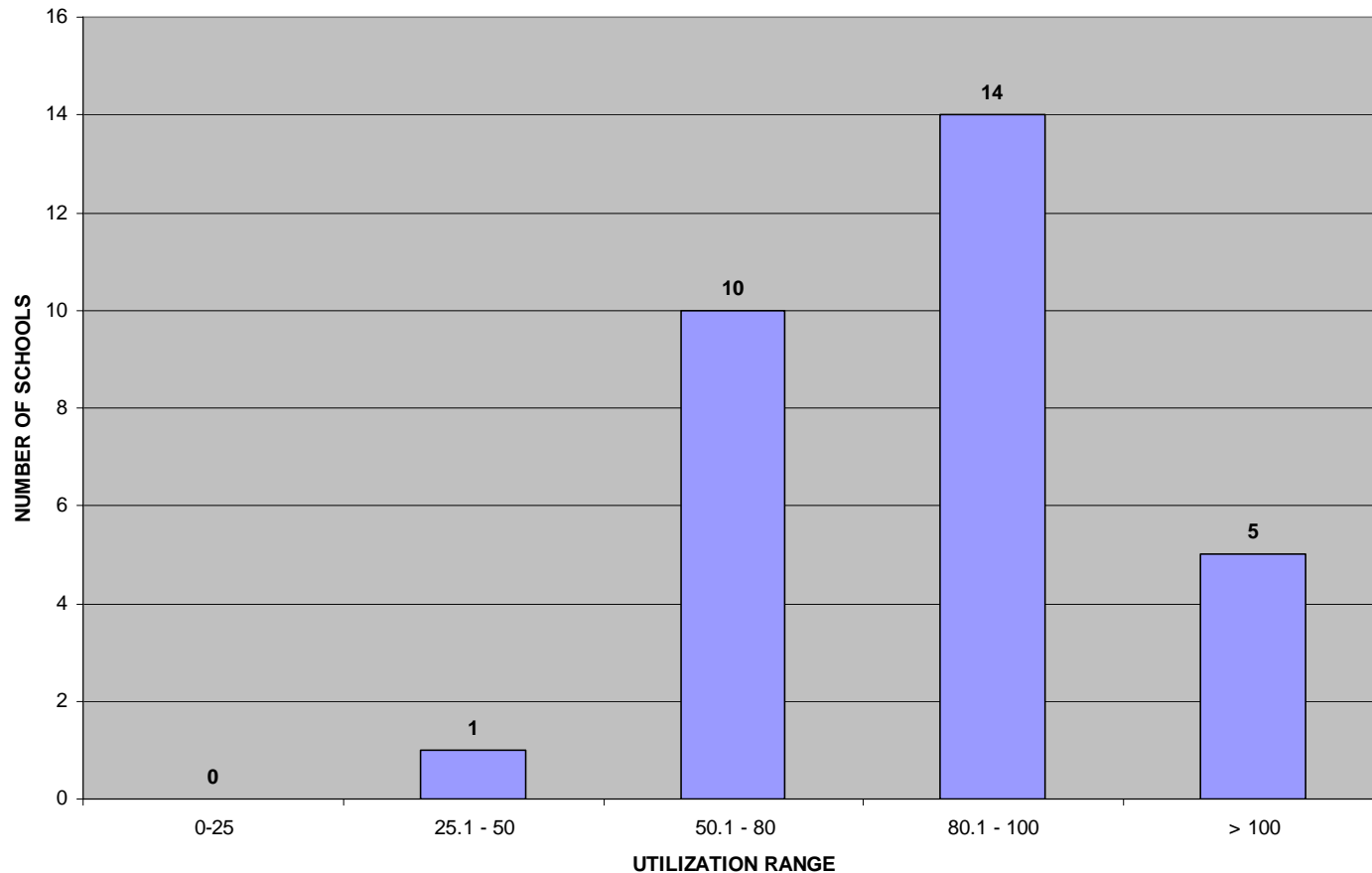
ST. CLAIR CATHOLIC DSB - 2007 ENROLMENT BY GRADE



ST. CLAIR CATHOLIC DSB - ENROLMENT VS CAPACITY

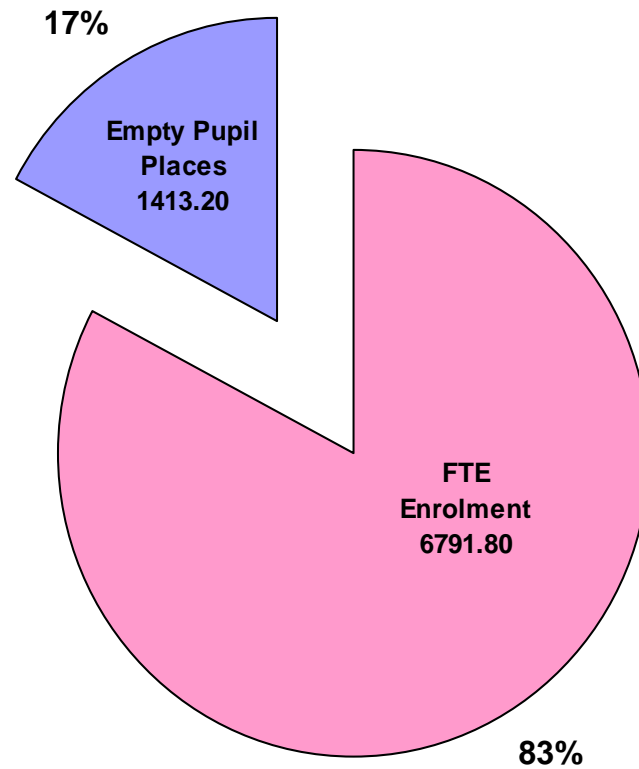


2007-08 Elementary School Utilization

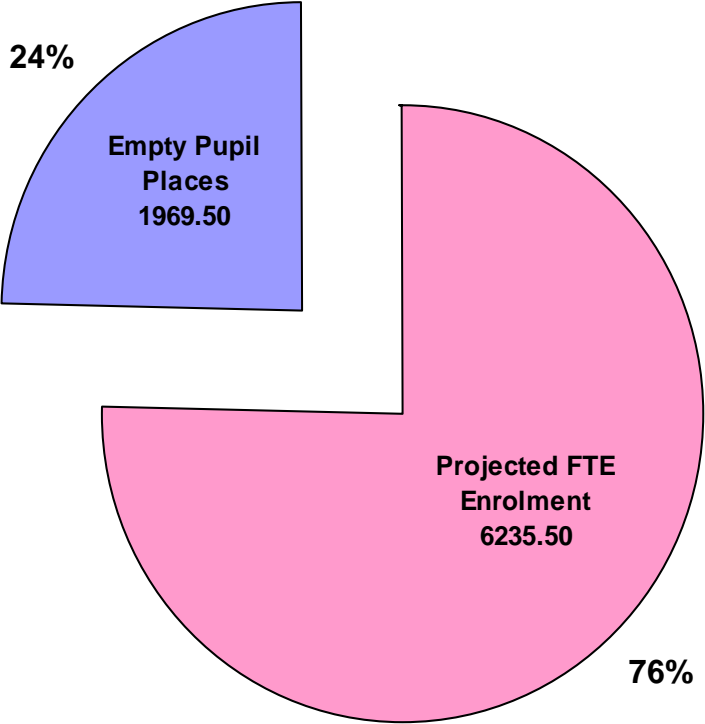


The School Utilization Rate compares the enrolment in open schools to the capacity of those schools. Top-Up funding is available for schools between 80 to 100% capacity. Approximately 40% of our schools are using less than 80% of the available space in those schools.

**ST. CLAIR CATHOLIC DSB
ELEMENTARY SCHOOL UTILIZATION 2007**



ST. CLAIR CATHOLIC DSB
PROJECTED ELEMENTARY SCHOOL UTILIZATION 2012

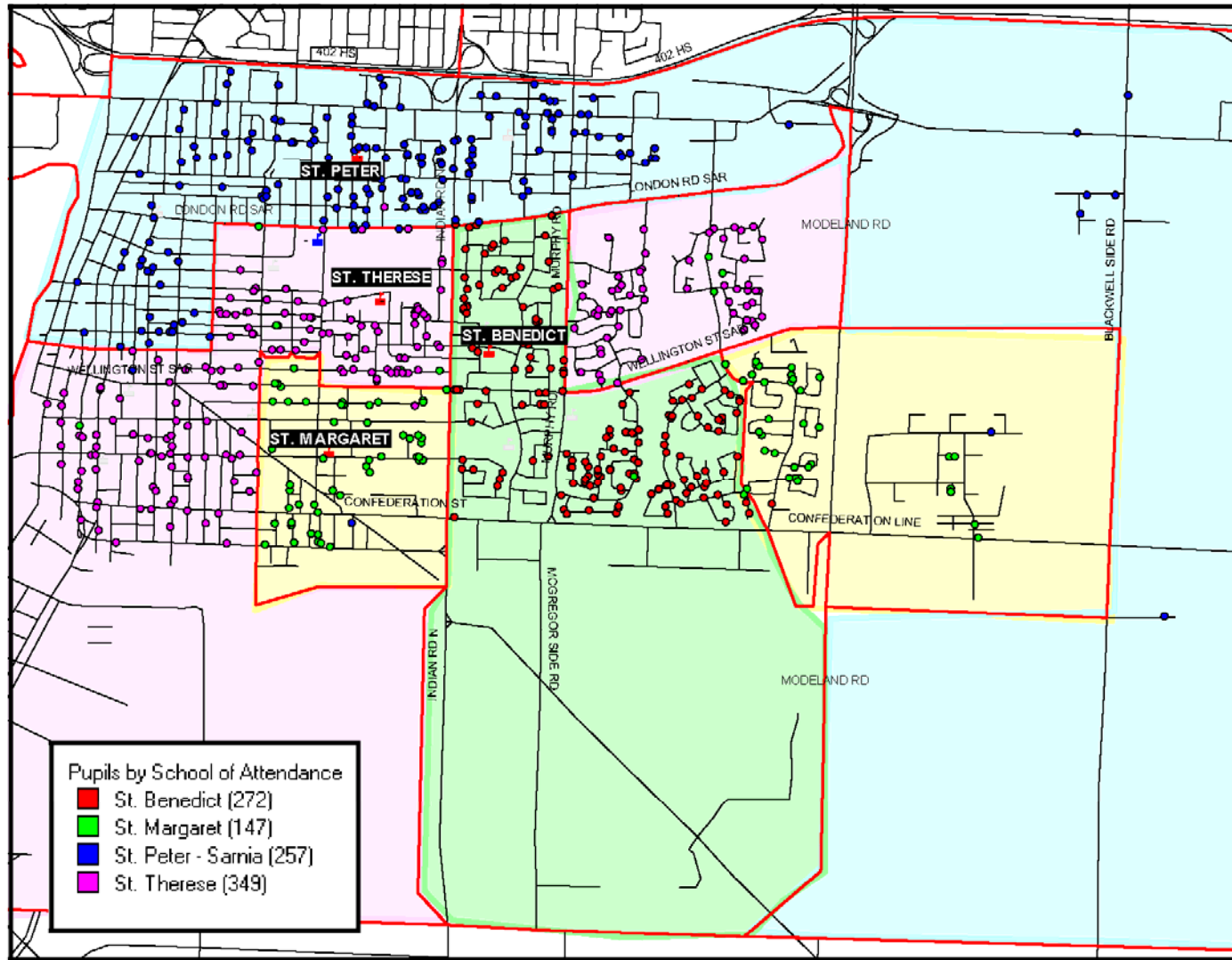




Attendance Area

- The current attendance area for South Sarnia Catholic Schools includes the area of Sarnia and Lambton County south of Hwy 402.
- The attendance areas for St. Therese and St. Margaret are split geographically.
- The accommodation review will provide an opportunity to review all South Sarnia school boundaries.

STUDENT DISTRIBUTION AND BOUNDARIES SOUTH SARNIA CATHOLIC SCHOOLS

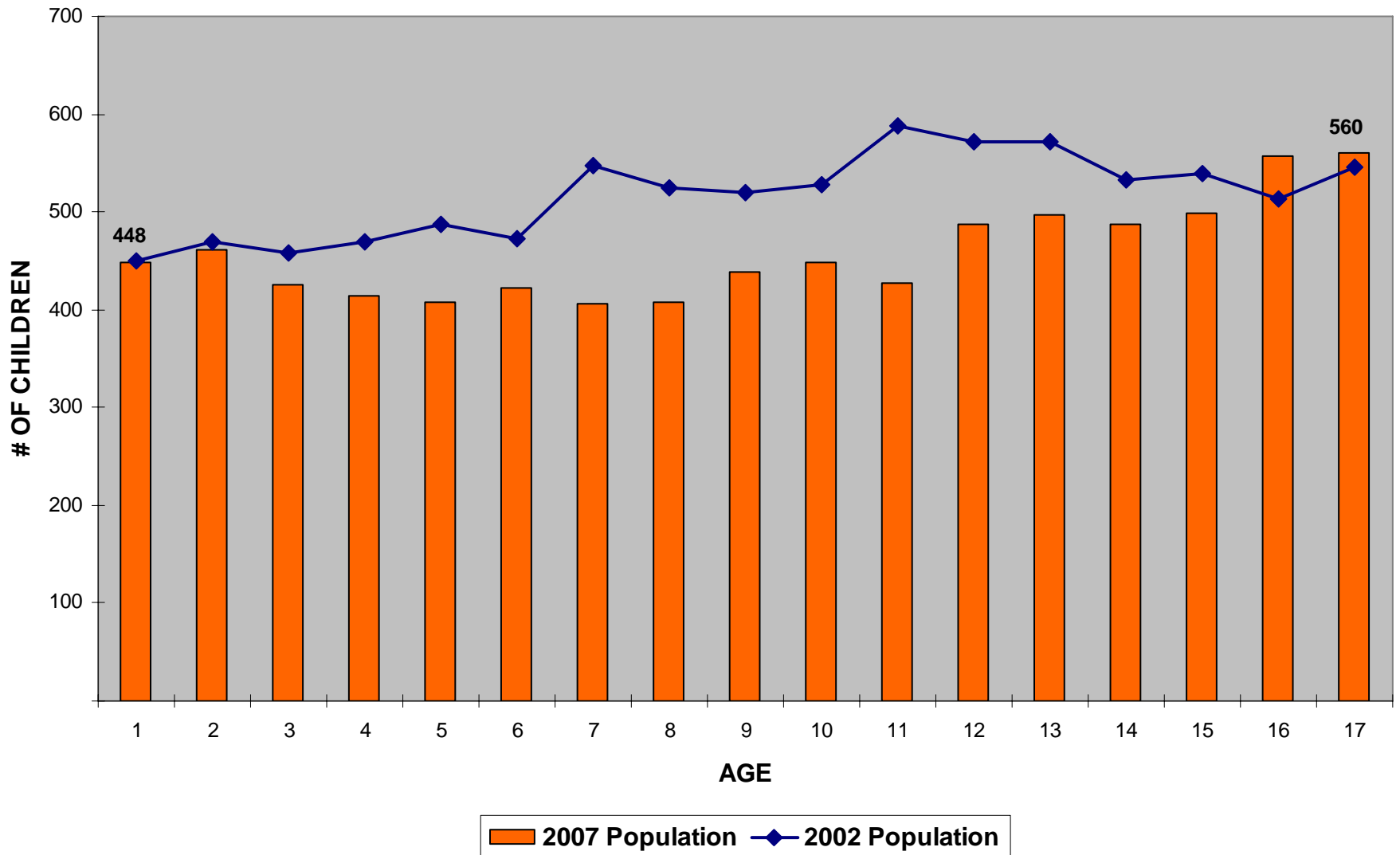




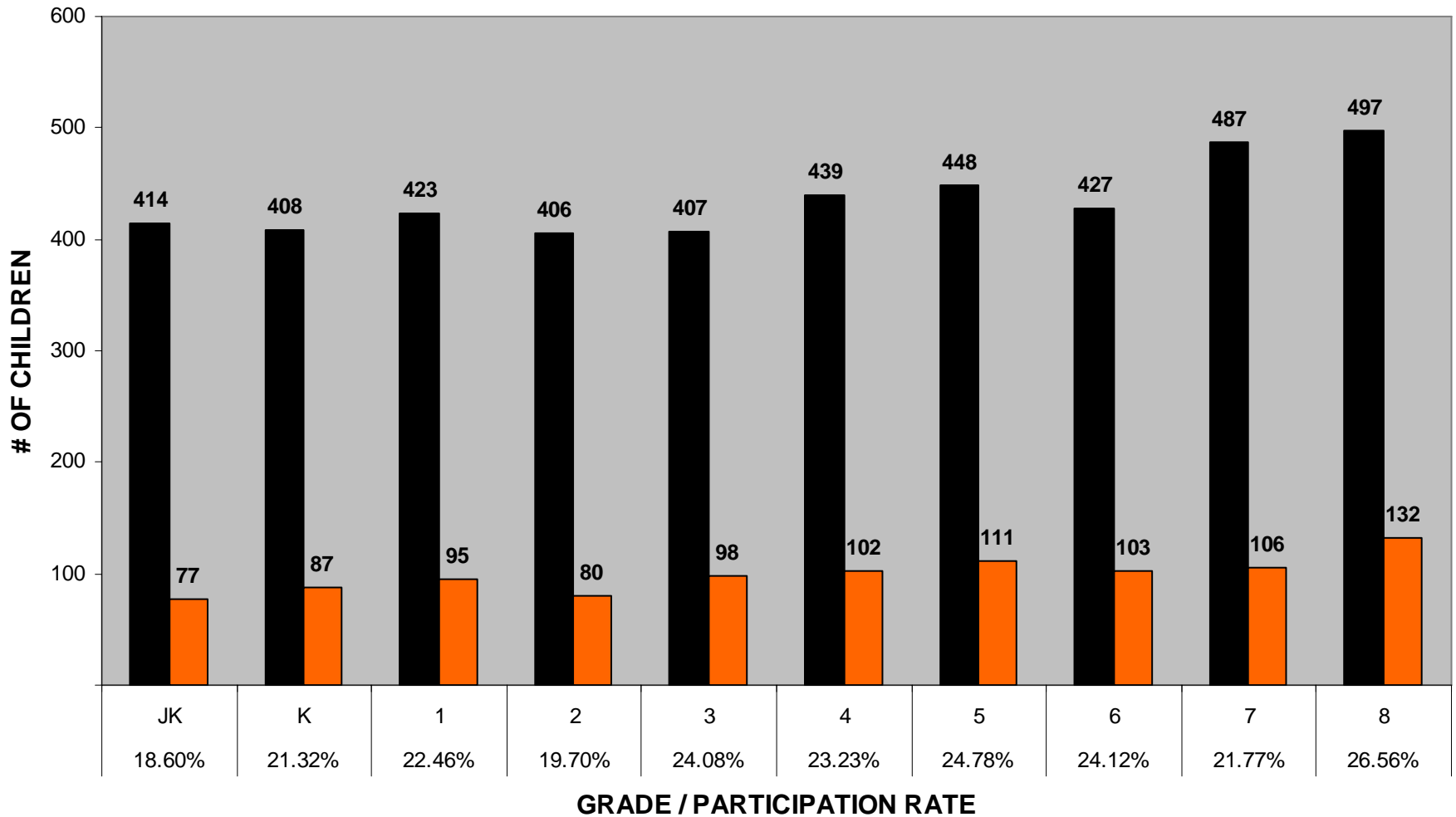
History of South Sarnia Schools

- In 1999, there were 6 schools in South Sarnia with a combined enrolment of 1,525.0 FTE and OTG capacity of 2,032.0 pupils
- Our Lady of Mercy School closed July 1, 2001 – students were transferred to St. Peter and St. Therese
- St. Joseph School closed July 1, 2002 – students were transferred to St. Therese. An additional boundary change was approved to transfer Sherwood Village students that attended St. Therese to St. Benedict

SOUTH SARNIA ATTENDANCE AREA - POPULATION BY AGE

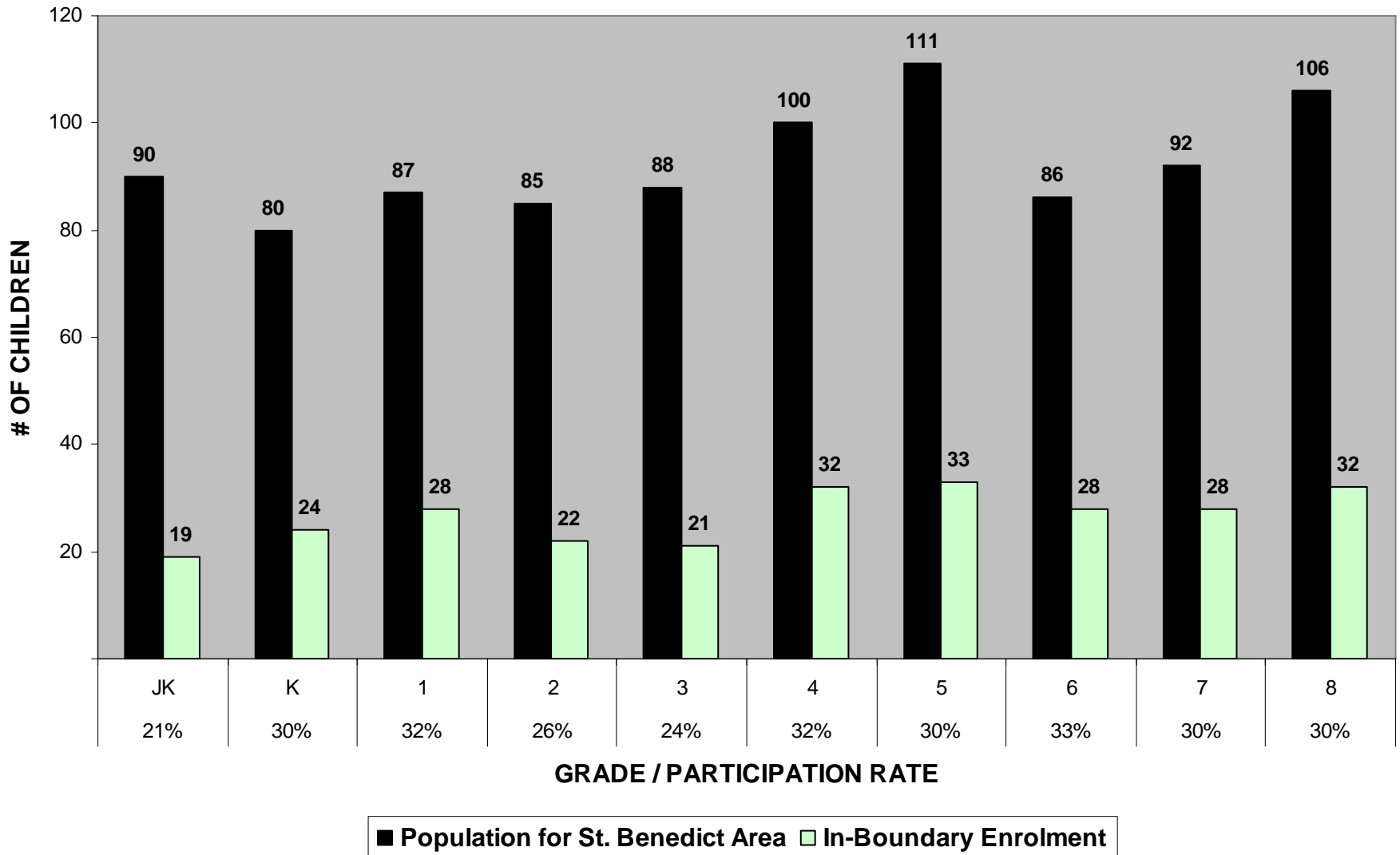


PARTICIPATION RATES - SOUTH SARNIA

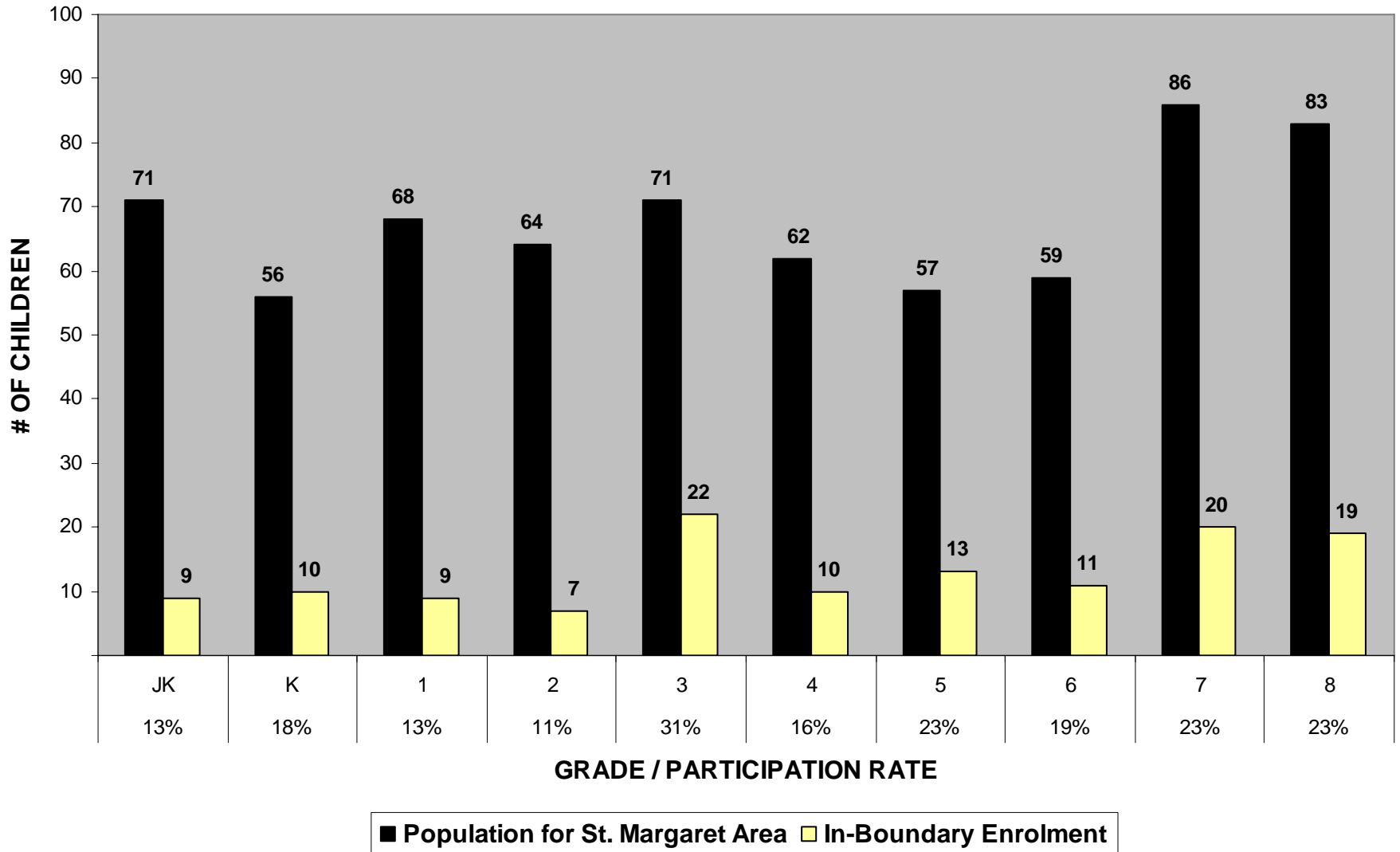


■ Population for South Sarnia ■ In-Boundary Enrolment

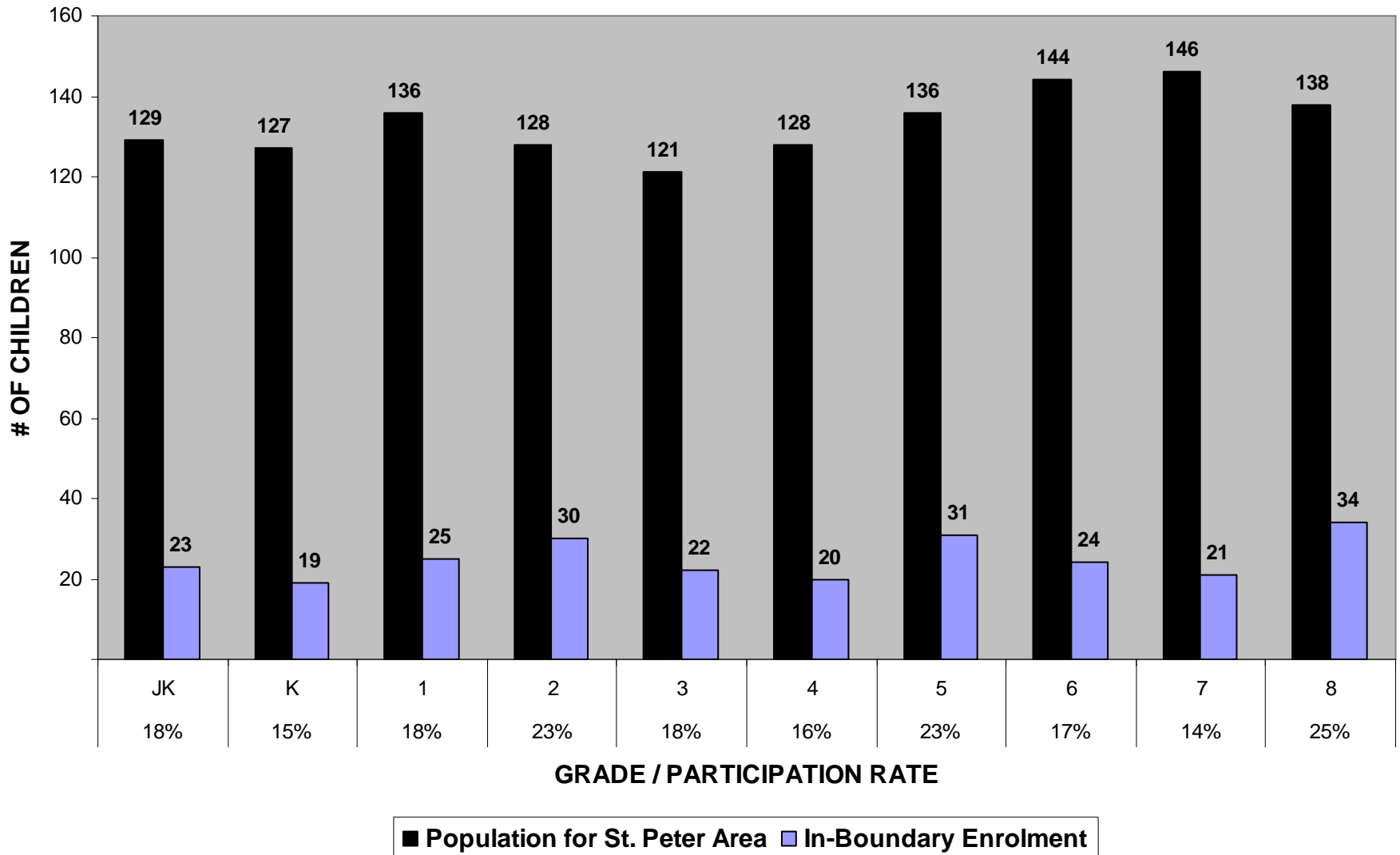
PARTICIPATION RATES - ST. BENEDICT CATHOLIC SCHOOL



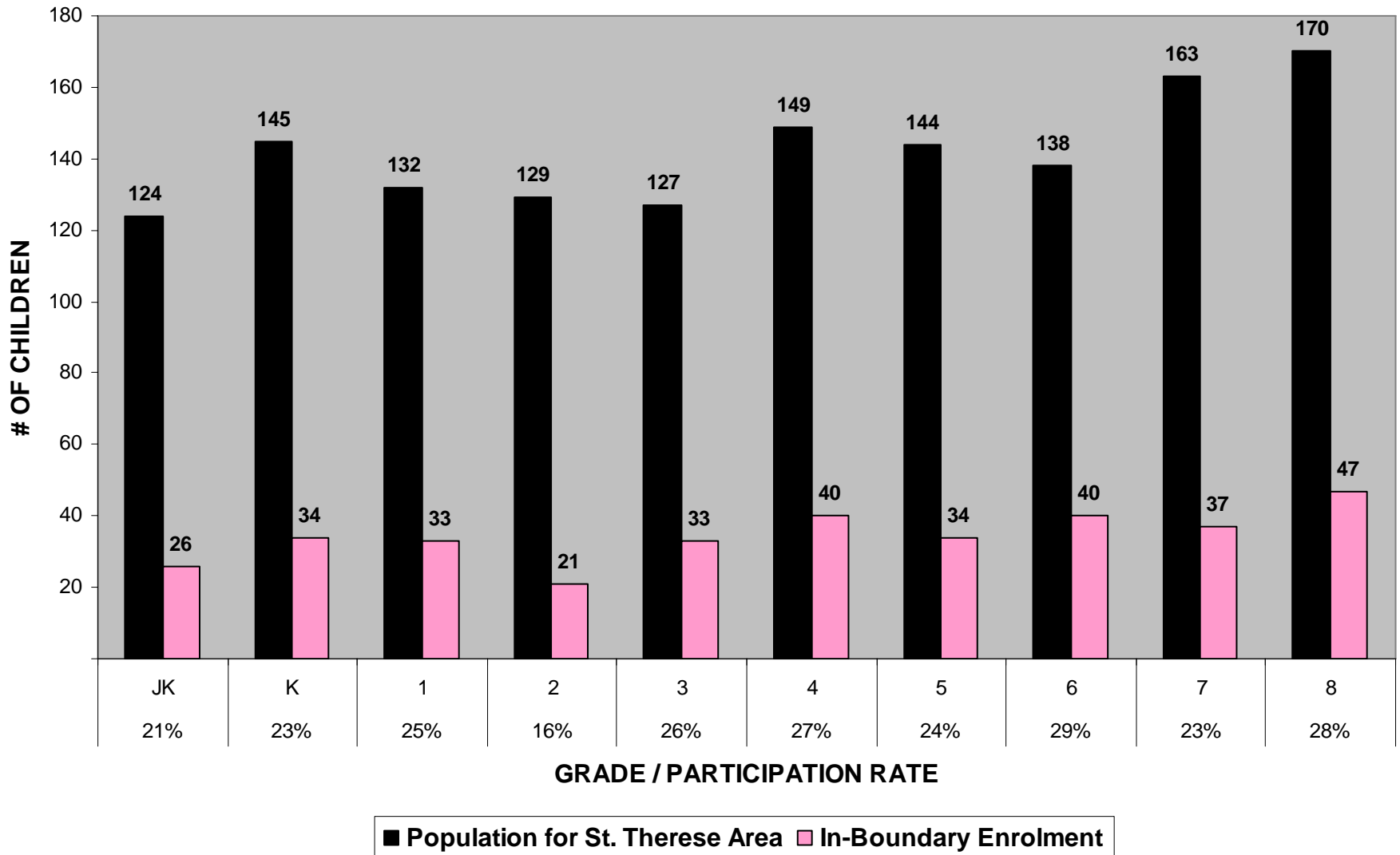
PARTICIPATION RATES - ST. MARGARET CATHOLIC SCHOOL



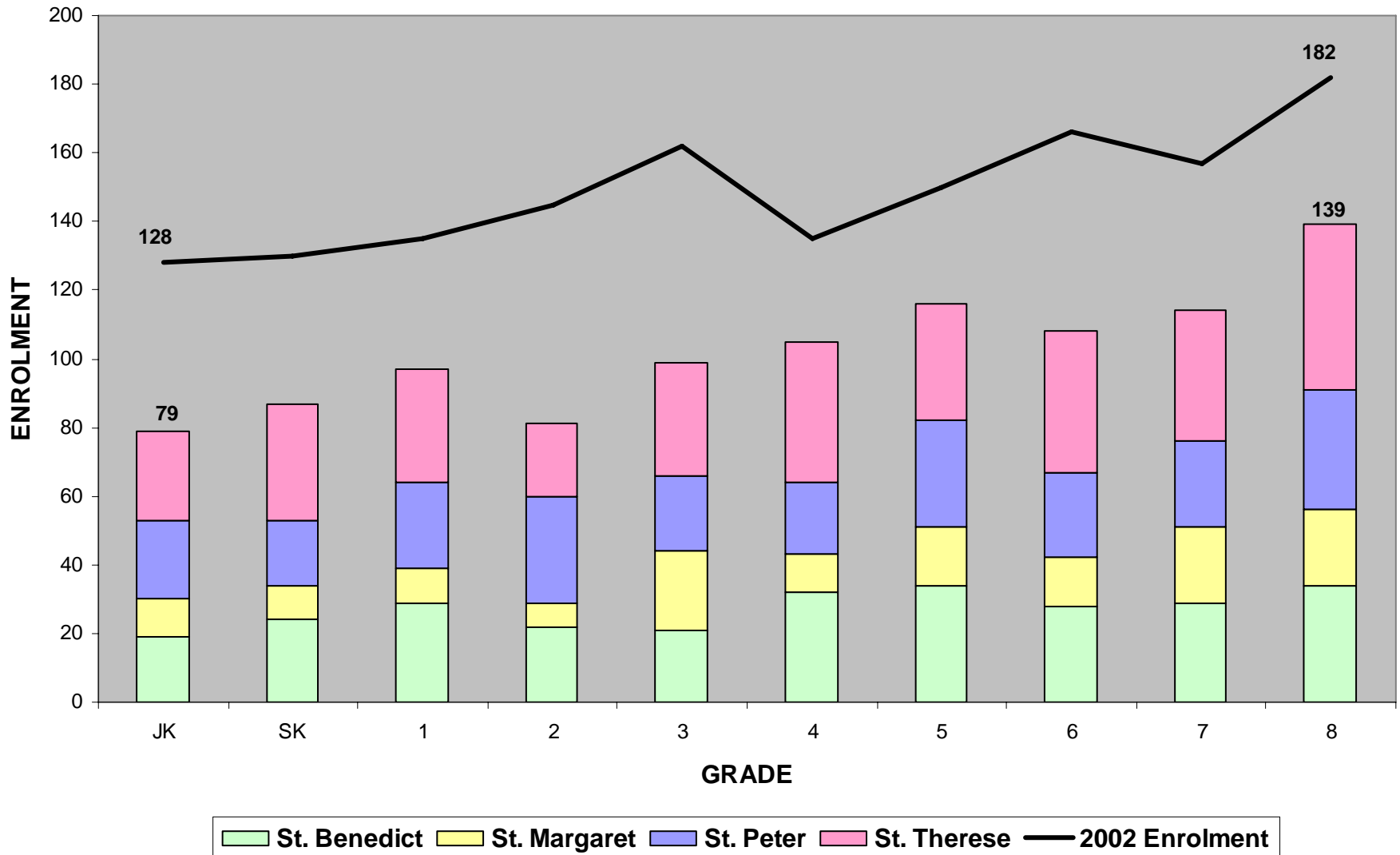
PARTICIPATION RATES - ST. PETER CATHOLIC SCHOOL



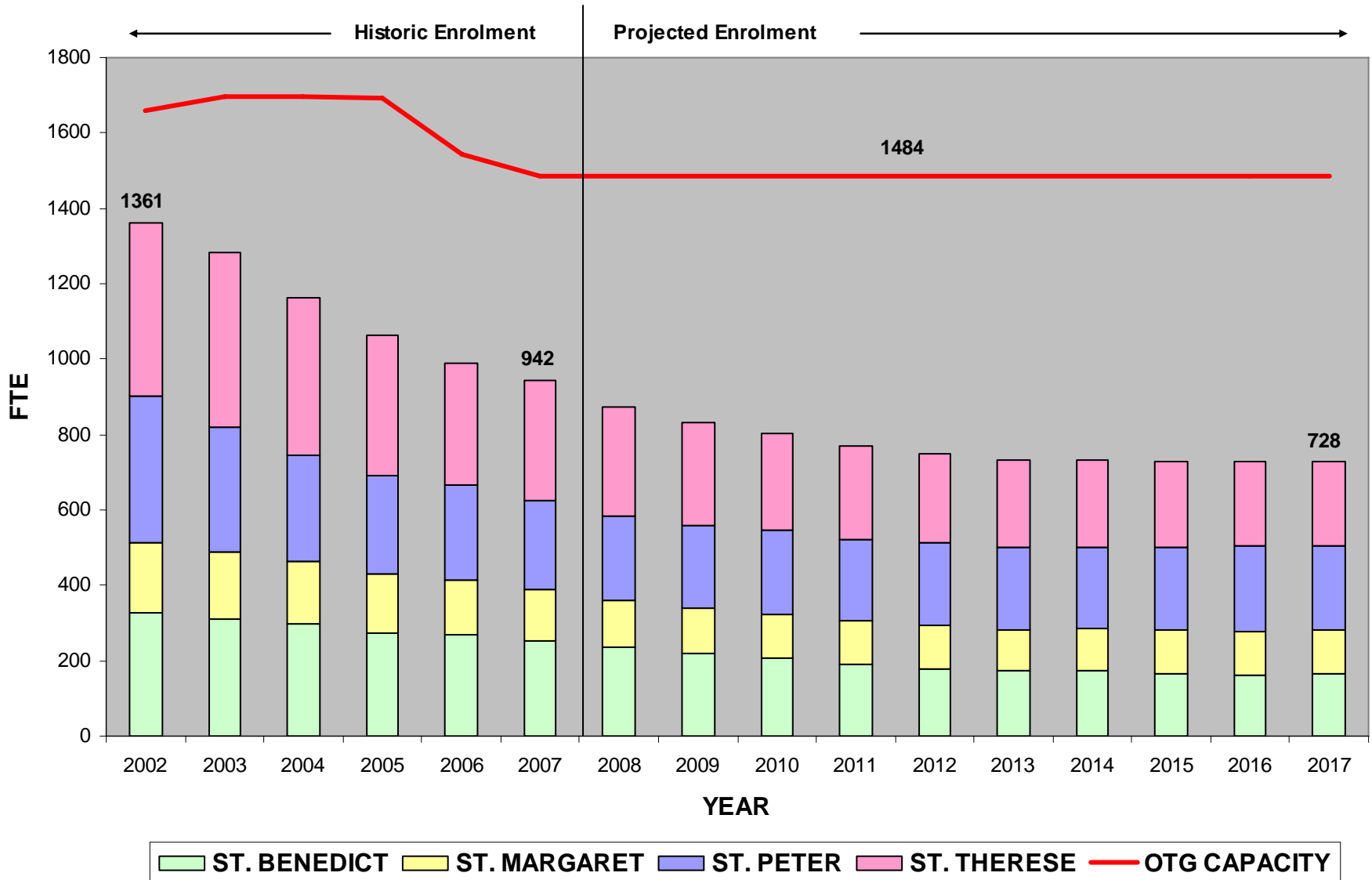
PARTICIPATION RATES - ST. THERESE CATHOLIC SCHOOL



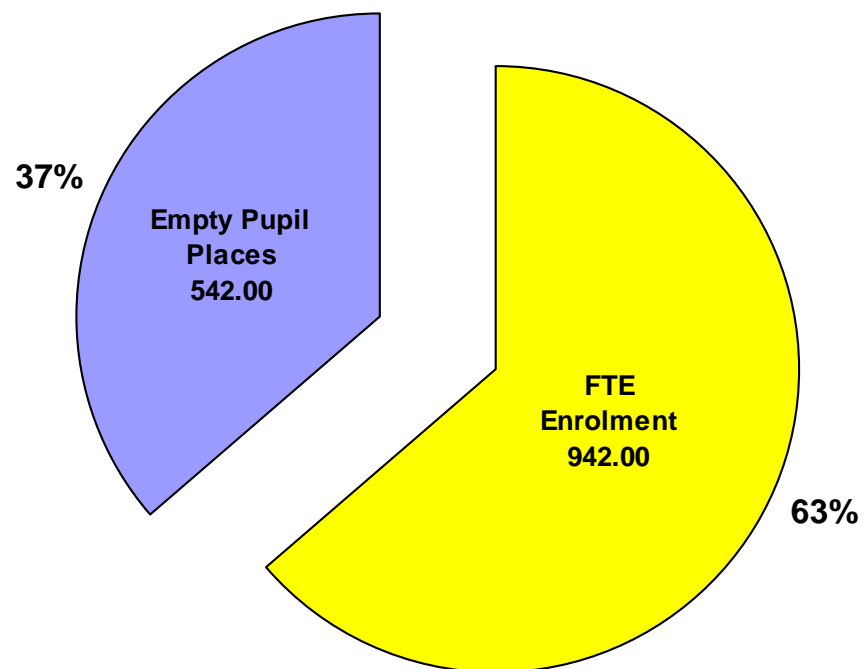
SOUTH SARNIA CATHOLIC SCHOOLS - 2007 ENROLMENT BY GRADE



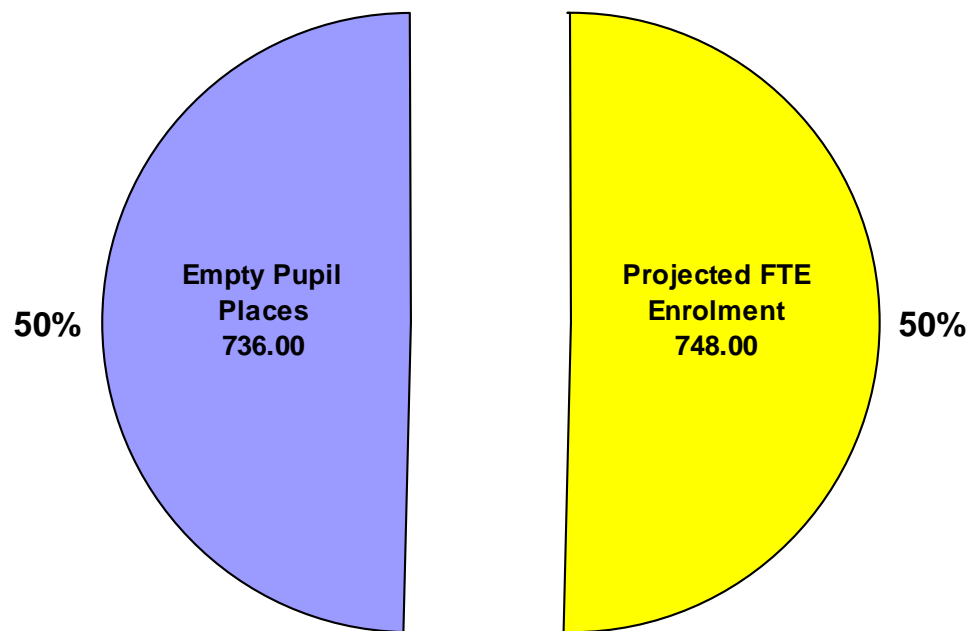
SOUTH SARNIA CATHOLIC SCHOOLS - ENROLMENT VS CAPACITY



SOUTH SARNIA CATHOLIC SCHOOLS COMBINED UTILIZATION 2007



**SOUTH SARNIA CATHOLIC SCHOOLS
PROJECTED COMBINED UTILIZATION 2012**





School Staffing Overview



School Staffing Overview

- Funding for staff salaries and benefits are based on Ministry benchmarks
- Classroom teachers are assigned based on Ministry regulations and class size guidelines
- Specific funding is provided for school administration to ensure that every school has a Principal and Secretary



St. Benedict – School Administration

	FTE	Cost
Principal / VP	1.0	\$115,525
School Secretary	1.0	\$42,685
Board Cost		\$158,210
Ministry Funding		\$154,245
Funding Shortfall		(\$3,965)



St. Benedict – Teaching Staff

	FTE
Classroom	11.5
Resource	1.0
Itinerant – FSL	1.0
Itinerant – Music	0.3
Itinerant – Physical Education	0.5



St. Benedict – Support Staff

	FTE
Educational Assistants	4.0
Library Technician	0.25
Custodians	1.4



St. Margaret – School Administration

	FTE	Cost
Principal / VP	1.0	\$115,525
School Secretary	1.0	\$42,685
		<hr/>
Board Cost		\$158,210
		<hr/>
Ministry Funding		\$154,245
Funding Shortfall		(\$3,965)



St. Margaret – Teaching Staff

	FTE
Classroom	5.5
Resource	1.0
Itinerant – FSL	0.6
Itinerant – Music	0.2
Itinerant – Physical Education	0.3



St. Margaret – Support Staff

	FTE
Educational Assistants	3.0
Library Technician	0.25
Custodians	1.3



St. Peter – School Administration

	FTE	Cost
Principal / VP	1.0	\$115,525
School Secretary	1.0	\$42,685
Board Cost		\$158,210
Ministry Funding		\$154,245
Funding Shortfall		(\$3,965)



St. Peter – Teaching Staff

	FTE
Classroom	10.5
Resource	1.5
Itinerant – FSL	1.0
Itinerant – Music	0.3
Itinerant – Physical Education	0.4



St. Peter – Support Staff

	FTE
Educational Assistants	6.5
Library Technician	0.25
Custodians	2.0



St. Therese – School Administration

	FTE	Cost
Principal / VP	1.3	\$147,097
School Secretary	1.5	\$64,028
Board Cost		\$211,125
Ministry Funding		\$207,369
Funding Shortfall		(\$3,756)



St. Therese – Teaching Staff

	FTE
Classroom	13.5
Resource	1.5
Itinerant – FSL	1.4
Itinerant – Music	0.4
Itinerant – Physical Education	0.5



St. Therese – Support Staff

	FTE
Educational Assistants	6.6
Library Technician	0.5
Custodians	2.5



Facilities Overview



Definitions

ReCAPP

Renewal **C**apital **A**sset **P**lanning **P**rocess

- Ministry requires all school boards to use ReCAPP system to maintain a database of future renewal needs by school
- Funding priorities for Ministry from a provincial perspective are determined based on school board renewal needs identified in this system

Definitions

Facility Condition Index (FCI)

- the ratio of the value of major repairs to the value of asset replacement expressed as a percentage

$$\text{Renewal Requirement} / \text{Replacement Cost of Asset} \\ \times 100 = \%$$

Good	< 5%
Fair	5-10%
Poor	10-30%
Critical	> 30%



Definitions

Prohibitive To Repair (PTR)

- PTR schools are currently defined as those whose costs of bringing the school up to Ministry standards would be greater than 65% of the replacement cost of the school
- Ministry originally identified a preliminary inventory of PTR schools based on a provincial inspection conducted in 2002-03 and the ReCAPP data generated from those reviews



Definitions

Prohibitive To Repair (PTR)

- In late 2006, Ministry provided school boards with the opportunity to identify schools as potential PTR candidates and submit an application for PTR Capital Funding
- Boards have increased the list of PTR schools based on renewal needs either missed or not included in the original visual inspections but considered significant, including asbestos and accessibility



Ministry Funding

School Operations Allocation

- Addresses the cost of operating schools i.e. heating, lighting, cleaning and maintaining
- Formula based
 - Enrolment x benchmark area requirement per pupil x benchmark operating cost per sq. ft.
 - Enrolment x 104.4 sq. ft. x \$6.18



Ministry Funding

School Renewal Allocation

- Addresses the costs of repairing and renovating schools
- Formula based
 - Enrolment x benchmark area requirement per pupil x benchmark renewal cost per sq. ft.
 - Enrolment x 104.4 sq. ft. x weighted average of \$0.65 and \$0.98 per sq. ft. for schools under and over 20 years of age respectively



Ministry Funding

Top-Up Funding

- Additional funding is provided for school operations and renewal for schools that are operating at less than full capacity
- Calculated on a school-by-school basis
- Maximum adjustment of 20% available



School Operations Funding

	St. Benedict
Regular Allocation (enrolment)	\$161,536
Top-Up Allocation	\$40,755
Total Funding	\$202,291
Maximum Funding Available (Occupancy > 80%)	\$203,774
Funding Shortfall	(\$1,483)



School Operations Funding

St. Margaret

Regular Allocation (enrolment)	\$88,023
Top-Up Allocation	\$36,370
<hr/>	
Total Funding	\$124,393
Maximum Funding Available (Occupancy > 80%)	\$181,849
Funding Shortfall	(\$57,456)



School Operations Funding

	St. Peter
Regular Allocation (enrolment)	\$152,186
Top-Up Allocation	\$52,620
Total Funding	\$204,806
Maximum Funding Available (Occupancy > 80%)	\$263,101
Funding Shortfall	(\$58,295)



School Operations Funding

	St. Therese
Regular Allocation (enrolment)	\$205,709
Top-Up Allocation	\$61,648
<hr/>	
Total Funding	\$267,357
Maximum Funding Available (Occupancy > 80%)	\$308,241
Funding Shortfall	(\$40,884)



School Renewal Funding

	St. Benedict
Regular Allocation (enrolment)	\$24,347
Top-Up Allocation	\$6,143
Total Funding	\$30,490
Maximum Funding Available (Occupancy > 80%)	\$30,713
Funding Shortfall	(\$223)



School Renewal Funding

St. Margaret

Regular Allocation (enrolment)	\$13,267
Top-Up Allocation	\$5,482
<hr/>	
Total Funding	\$18,749
Maximum Funding Available (Occupancy > 80%)	\$27,409
Funding Shortfall	(\$8,660)



School Renewal Funding

	St. Peter
Regular Allocation (enrolment)	\$22,938
Top-Up Allocation	\$7,931
Total Funding	\$30,869
Maximum Funding Available (Occupancy > 80%)	\$39,655
Funding Shortfall	(\$8,786)



School Renewal Funding

	St. Therese
Regular Allocation (enrolment)	\$31,005
Top-Up Allocation	\$9,292
Total Funding	\$40,297
Maximum Funding Available (Occupancy > 80%)	\$46,459
Funding Shortfall	(\$6,162)



PTR Allocation

- Planning approval for \$4,245,449 received by the St. Clair Catholic DSB from the Ministry to address the facility condition for students at St. Benedict Catholic School
- Accommodation Review Committee (ARC) may consider any potential solution to the issue of excess capacity in South Sarnia schools – no restrictions



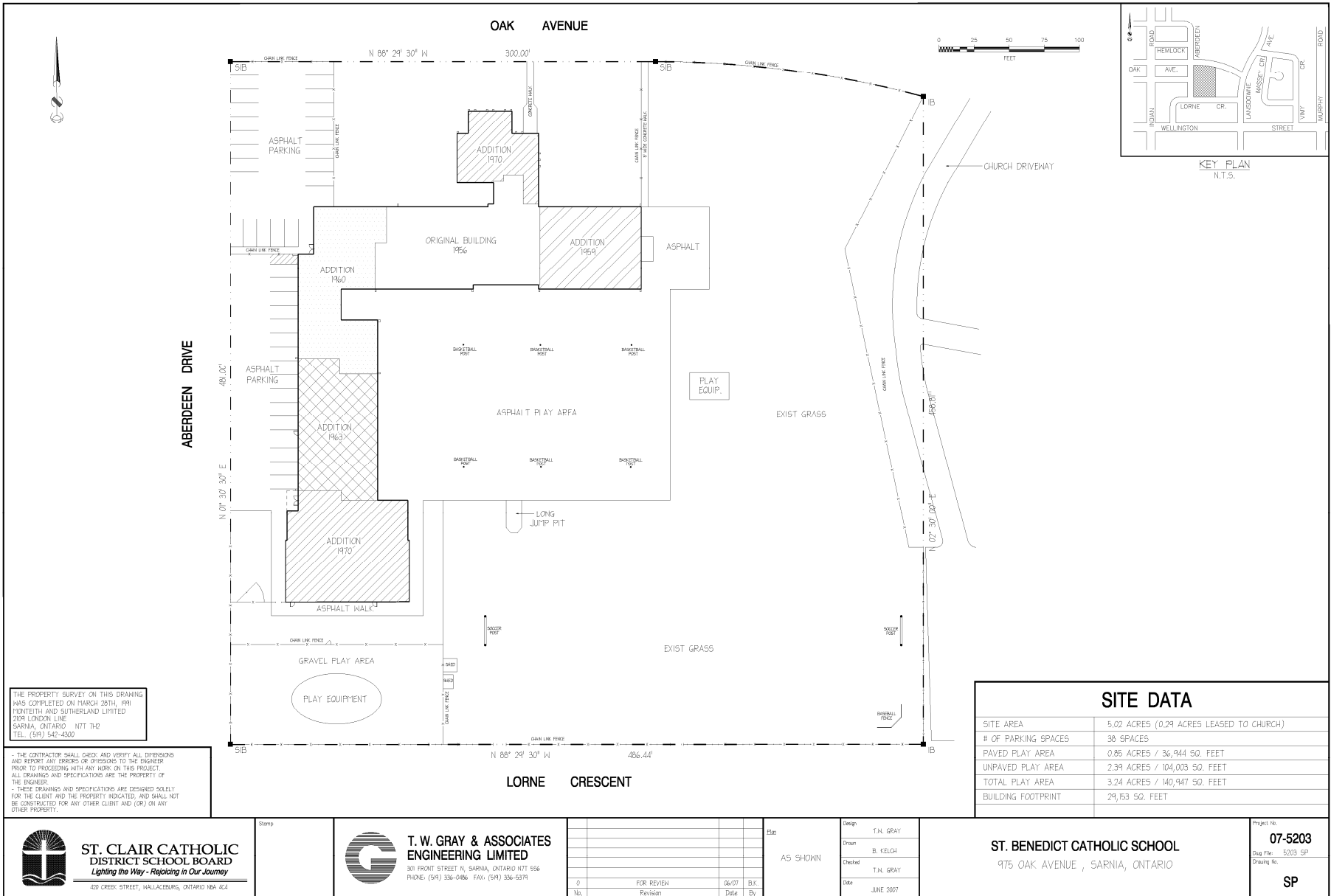
PTR Allocation

- Recommendation from ARC must:
 - Address the accommodation of St. Benedict students
 - Result in a reduction of the Board's inventory of excess pupil places i.e. closure of school(s)



Facility Detail – St. Benedict

- Building age – 1956 (additions in 1959, 1960, 1963, 1970)
- Gross floor area – 29,153 sq. ft.
- Site area – 5.02 acres
 - Future expansion possible (either new construction or portables)
- Classrooms in Use – 12
- Classrooms Vacant – 2
- Classrooms Best Start – 2





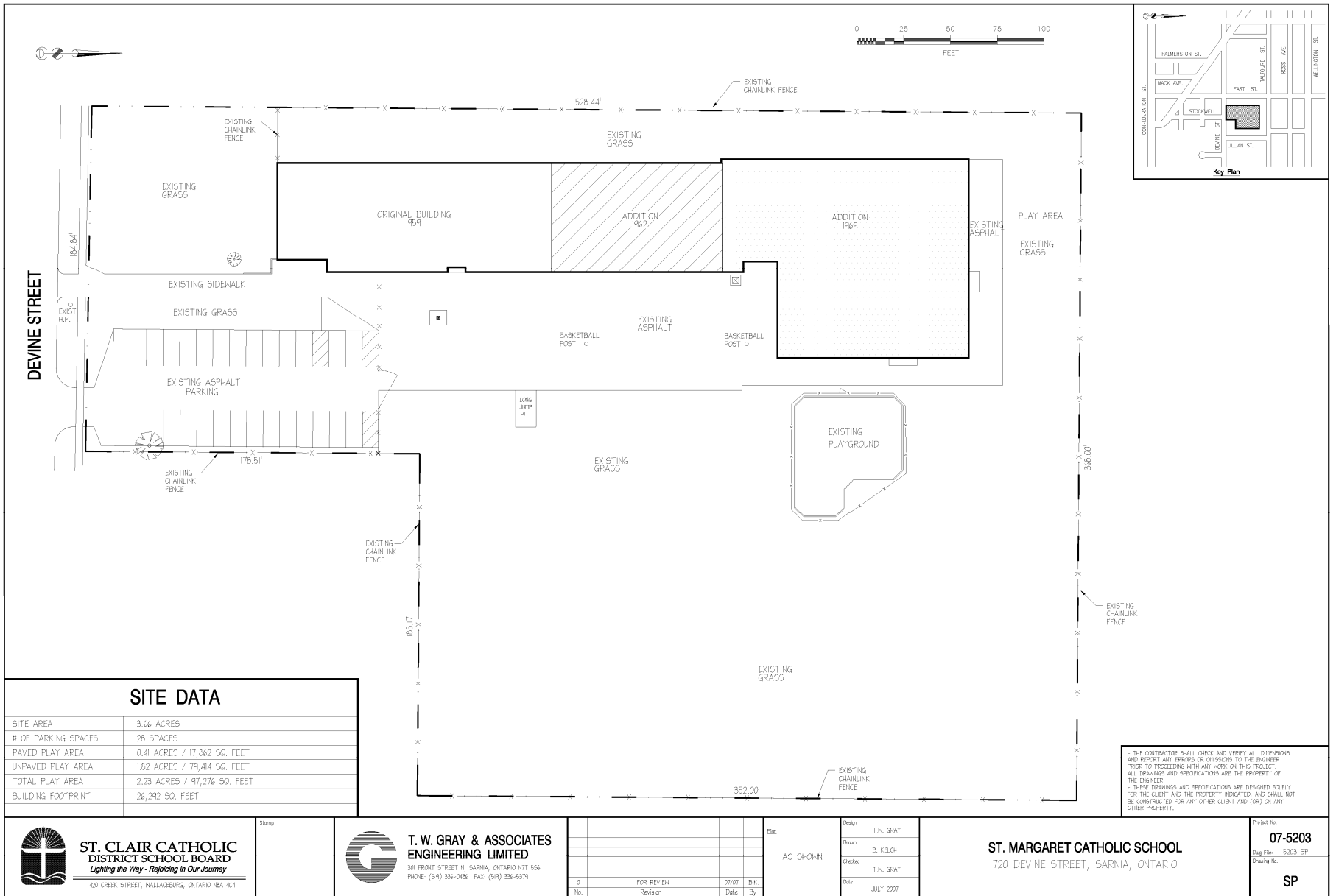
Facility Detail – St. Benedict

On The Ground Capacity	316
Current Enrolment (FTE)	250.5
Current OTG % - 2007/08	79.3%
Projected OTG % - 2012/13	56.5%



Facility Detail – St. Margaret

- Building age – 1959 (additions in 1962, 1969)
- Gross floor area – 26,292 sq. ft.
- Site area – 3.66 acres
 - Limited space for future expansion
- Classrooms in Use – 7
- Classrooms Vacant – 5



SITE DATA

SITE AREA	3.66 ACRES
# OF PARKING SPACES	28 SPACES
PAVED PLAY AREA	0.41 ACRES / 17,862 SQ. FEET
UNPAVED PLAY AREA	1.82 ACRES / 79,414 SQ. FEET
TOTAL PLAY AREA	2.23 ACRES / 97,276 SQ. FEET
BUILDING FOOTPRINT	26,292 SQ. FEET

THE CONTRACTOR SHALL CHECK AND VERIFY ALL DIMENSIONS AND REPORT ANY ERRORS OR OMISSIONS TO THE ENGINEER. PRIOR TO PROCEEDING WITH ANY WORK ON THIS PROJECT. ALL DRAWINGS AND SPECIFICATIONS ARE THE PROPERTY OF THE ENGINEER. THESE DRAWINGS AND SPECIFICATIONS ARE DESIGNED SOLELY FOR THE CLIENT AND THE PROPERTY INDICATED, AND SHALL NOT BE CONSTRUCTED FOR ANY OTHER CLIENT AND (OR) ON ANY OTHER PROJECT.



ST. CLAIR CATHOLIC DISTRICT SCHOOL BOARD
Lighting the Way - Rejoicing in Our Journey
420 CREEK STREET, WALLACEBURG, ONTARIO N9A 4C4

Stamp



T. W. GRAY & ASSOCIATES ENGINEERING LIMITED
301 FRONT STREET N, SARNIA, ONTARIO N7T 5S6
PHONE: (519) 336-0406 FAX: (519) 336-5379

No.	FOR REVIEW	07/07	B.K.
	Revision	Date	By
0			
1			

Plan

AS SHOWN

Design	T.M. GRAY
Drawn	B. KELCH
Checked	T.M. GRAY
Date	JULY 2007

ST. MARGARET CATHOLIC SCHOOL
720 DEVINE STREET, SARNIA, ONTARIO

Project No. **07-5203**
Drawn File: 5203 SP
Drawing No.

SP



Facility Detail – St. Margaret

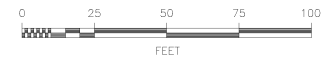
On The Ground Capacity	282
Current Enrolment (FTE)	136.5
Current OTG % - 2007/08	48.4%
Projected OTG % - 2012/13	41.0%



Facility Detail – St. Peter

- Building age – 1948 (additions in 1952, 1954, 1964, 1969)
- Gross floor area – 38,508 sq. ft.
- Site area – 2.34 acres
 - Limited space for future expansion
- Classrooms in Use – 11
- Classrooms Vacant – 7

OXFORD STREET



THE PROPERTY SURVEY ON THIS DRAWING WAS COMPLETED ON DEC 11TH, 2003 BY MONTETH AND SUTHERLAND LIMITED 209 LONDON LINE SARNIA, ONTARIO N7T 7H2 TEL (519) 542-4300

THE CONTRACTOR SHALL OBEY AND VERIFY ALL ORDINANCES AND REPORT ANY ERRORS OR OMISSIONS TO THE ENGINEER PRIOR TO PROCEEDING WITH ANY WORK ON THIS PROJECT. ALL DRAWINGS AND SPECIFICATIONS ARE THE PROPERTY OF THE ENGINEER. THESE DRAWINGS AND SPECIFICATIONS ARE DESIGNED SOLELY FOR THE CLIENT AND THE PROPERTY INDICATED, AND SHALL NOT BE CONSTRUCTED FOR ANY OTHER CLIENT AND (OR) ON ANY OTHER PROPERTY.

SITE DATA

SITE AREA	2.34 ACRES
# OF PARKING SPACES	0 SPACES ON-SITE (AVAILABLE PARKING OFF-SITE)
PAVED PLAY AREA	0.51 ACRES / 22,307 SQ. FEET
UNPAVED PLAY AREA	1.03 ACRES / 44,671 SQ. FEET
TOTAL PLAY AREA	1.54 ACRES / 66,978 SQ. FEET
BUILDING FOOTPRINT	26,662 SQ. FEET

RAYBURNE AVENUE



ST. CLAIR CATHOLIC DISTRICT SCHOOL BOARD
Lighting the Way - Rejoicing in Our Journey

430 CREEB STREET, HALLACREBURG, ONTARIO N8A 1C1



T.W. GRAY & ASSOCIATES ENGINEERING LIMITED

301 FRONT STREET NORTH, SARNIA, ONTARIO N7T 5S6
PHONE: (519) 336-0486 FAX: (519) 336-5379

Revision	Date	By
0	FOR REVIEW	07/07
No.	Revision	Date

Scale
AS SHOWN

Design	T.J. GRAY
Drawn	B. KELCH
Checked	T.J. GRAY
Date	JULY 2007

ST. PETER CATHOLIC SCHOOL
696 OXFORD STREET, SARNIA, ONTARIO

Project No.
07-5203
Drawn File: 5203 SP
Drawing No.
SP



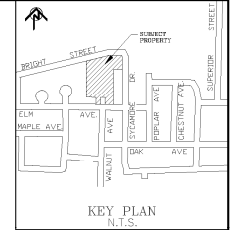
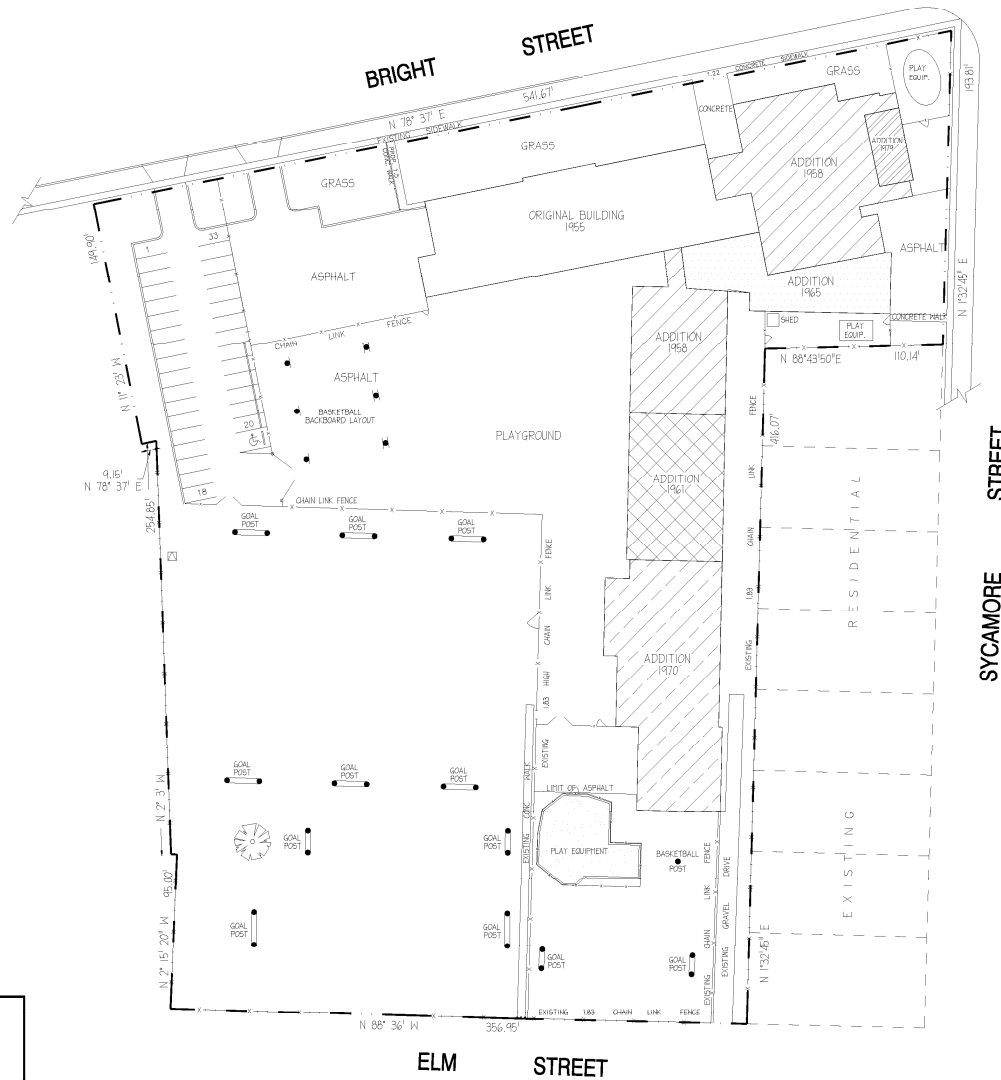
Facility Detail – St. Peter

On The Ground Capacity	408
Current Enrolment (FTE)	236
Current OTG % - 2007/08	57.8%
Projected OTG % - 2012/13	53.7%



Facility Detail – St. Therese

- Building age – 1954 (additions in 1958, 1961, 1965, 1970, 1979)
- Gross floor area – 45,417 sq. ft.
- Site area – 5.23 acres
 - Future expansion possible (either new construction or portables)
- Classrooms in Use – 14
- Classrooms Vacant – 6
- Classrooms Best Start – 2



THE PROPERTY SURVEY ON THIS DRAWING WAS COMPLETED ON OCT. 29TH, 1998 BY FRONTIER AND SUTHERLAND LIMITED 2104 LONDON LINE SARNIA, ONTARIO N7T 7H2 TEL. (519) 542-4300

- THE CONTRACTOR SHALL CHECK AND VERIFY ALL DIMENSIONS AND REPORT ANY ERRORS OR OMISSIONS TO THE ENGINEER PRIOR TO PROCEEDING WITH ANY WORK ON THIS PROJECT. ALL DRAWINGS AND SPECIFICATIONS ARE THE PROPERTY OF THE ENGINEER.
- THESE DRAWINGS AND SPECIFICATIONS ARE DESIGNED SOLELY FOR THE CLIENT AND THE PROPERTY INDICATED, AND SHALL NOT BE CONSTRUCTED FOR ANY OTHER CLIENT AND/OR ON ANY OTHER PROPERTY.

SITE DATA

SITE AREA	5.23 ACRES
# OF PARKING SPACES	33 SPACES
PAVED PLAY AREA	1.07 ACRES / 46,790 SQ. FEET
UNPAVED PLAY AREA	2.53 ACRES / 110,053 SQ. FEET
TOTAL PLAY AREA	3.60 ACRES / 156,843 SQ. FEET
BUILDING FOOTPRINT	41,832 SQ. FEET



**ST. CLAIR CATHOLIC
DISTRICT SCHOOL BOARD**
Lighting the Way - Rejoicing in Our Journey
400 CREEK STREET, WALLACEBURG, ONTARIO N9A 4C4

Stamp



**T. W. GRAY & ASSOCIATES
ENGINEERING LIMITED**
30 FRONT STREET N, SARNIA, ONTARIO N7T 5S6
PHONE: (519) 336-0406 FAX: (519) 336-5379

Design	T.W. GRAY
Drawn	B. KELCH
Checked	T.W. GRAY
Date	JULY 2007

AS SHOWN	
FOR REVIEW	07/07 B.K.
Revision	Date By

Design	T.W. GRAY
Drawn	B. KELCH
Checked	T.W. GRAY
Date	JULY 2007

ST. THERESE CATHOLIC SCHOOL
559 BRIGHT STREET, SARNIA, ONTARIO

Project No.
07-5203
Drawn File: 5203 SP
Drawing No.
SP



Facility Detail – St. Therese

On The Ground Capacity	478
Current Enrolment (FTE)	319
Current OTG % - 2007/08	66.7%
Projected OTG % - 2012/13	49.2%



ReCAPP Data

	Renewal Costs		FCI %
	(5 yrs)	(10 yrs)	(5 yrs)
St. Benedict	\$2,883,572	\$3,474,929	51.42%
St. Margaret	\$961,689	\$1,704,302	23.16%
St. Peter	\$2,701,084	\$3,149,071	45.33%
St. Therese	\$1,742,716	\$2,968,240	21.64%



Annual Utility Costs

	STB	STM	STP	STT
Electricity	\$19,881	\$19,317	\$34,906	\$49,724
Natural Gas	\$22,179	\$13,646	\$19,442	\$12,001
Water	\$5,213	\$1,856	\$3,550	\$4,906
Total Utilities	\$47,273	\$34,819	\$57,898	\$66,631
<hr/>				
Cost per Sq. Ft.	\$1.62	\$1.32	\$1.50	\$1.47



Gymnasium

	Square footage
St. Benedict	2,856
St. Margaret	2,415
St. Peter	3,139
St. Therese	5,192

* *Ministry benchmark - 2,002 to 3,143 sq. ft.



Library Resource Centre

	Square footage
St. Benedict	1,626
St. Margaret	1,187
St. Peter	1,496
St. Therese	1,763

* *Ministry benchmark - 5 sq. ft. per pupil



Accessibility Issues – St. Benedict

- Exterior Entrances – two (2) with ramps, two (2) at grade
- Automatic Door Openers – no
- Barrier Free Washrooms
 - One washroom is handicap accessible
- Designated Parking – one (1) space requiring proper signage
- Outstanding Issues
 - Entrances require auto opening devices



Accessibility Issues – St. Margaret

- Exterior Entrances – all but one are at grade
- Automatic Door Openers – no
- Barrier Free Washrooms
 - One washroom is handicap accessible but does not meet current building code
- Designated Parking – no
- Outstanding Issues
 - Entrances require auto opening devices



Accessibility Issues – St. Peter

- Exterior Entrances – two (2) with ramps
- Automatic Door Openers – one entrance
- Barrier Free Washrooms
 - One washroom is handicap accessible but is in a remote location through the girls change room
- Designated Parking – no
- Outstanding Issues
 - Entrances require auto opening devices
 - Installation of elevator required for access to second floor
 - Parking is only available on the street



Accessibility Issues – St. Therese

- Exterior Entrances – one (1) with ramp, three (3) at grade
- Automatic Door Openers – no
- Barrier Free Washrooms
 - None of the washrooms are handicap accessible
- Designated Parking – no
- Outstanding Issues
 - Entrances require auto opening devices
 - Installation of elevator required for access to second floor
 - Parking is in a remote location



General Facility Information

- Air Conditioning – three of four schools are completely air conditioned
 - St. Margaret, St. Peter and St. Therese – 100%
 - St. Benedict – 23%
- Alarm Systems – all schools have proper alarm systems in place to protect students, staff and the building



General Facility Information

- Communication/Public Address System
 - All four schools have appropriate in-school communication systems
- Vandalism, Burglary, etc.
 - All schools have a recent history of vandalism and theft of equipment



Child Care Services – St. Benedict

- Best Start initiative occupying two (2) classrooms
- County of Lambton paid for required renovation costs
- Board is required to re-create the existing program at a new location in the event of a school closure
- Gross floor area - 1,853 sq. ft.
- Rental revenue for 2007/08 - \$12,971



Child Care Services – St. Benedict

- All custodial operations, maintenance and renewal costs are covered under the current lease agreement
- Coronation Park Daycare is the current service provider
- Child care services offered at this location include the Before & After School Program and the Best Start JK/K Wrap Around Program



Child Care Services – St. Therese

- Best Start initiative occupying two (2) classrooms
- County of Lambton paid for required renovation costs
- Board is required to re-create the existing program at a new location in the event of a school closure
- Gross floor area - 2,910 sq. ft.
- Rental revenue for 2007/08 - \$20,370



Child Care Services – St. Therese

- All custodial operations, maintenance and renewal costs are covered under the current lease agreement
- Our Kids Child Care Lambton Inc. is the current service provider
- Child care services offered at this location include the Before & After School Program and the Best Start JK/K Wrap Around and Early Learning Framework (ELF) Programs



Child Care Services – Other

- St. Margaret – no services currently being provided on site
- St. Peter – Before & After School Program provided on site by the YMCA of Sarnia-Lambton when numbers warrant



Student Transportation Overview



Transportation Funding

- Funding for student transportation is provided for system as a whole, not specific to schools
- Funding is based on 1997 model when school boards were amalgamated with adjustments for CPI and periodic enhancements by Ministry
- Provincial review of transportation funding currently underway



Transportation Funding

- St. Clair Catholic DSB currently operates within the transportation allocation provided by the Ministry's funding model



Transportation Data – St. Benedict

- Eligible Riders – 135 (49.6%)
- Average Ride Time – 8 min.
- Maximum Ride Time – 15 min.
- Buses servicing school – 5
- Cost of service – \$155,129



Transportation Data – St. Margaret

- Eligible Riders – 56 (38.1%)
- Average Ride Time – 11 min.
- Maximum Ride Time – 22 min.
- Buses servicing school – 3
- Cost of service – \$27,693



Transportation Data – St. Peter

- Eligible Riders – 91 (35.4%)
- Average Ride Time – 14 min.
- Maximum Ride Time – 50 min.
- Buses servicing school – 3
- Cost of service – \$43,345



Transportation Data – St. Therese

- Eligible Riders – 223 (63.9%)
- Average Ride Time – 9 min.
- Maximum Ride Time – 17 min.
- Buses servicing school – 7
- Cost of service – \$135,596