

## CSP PARTNER AGENCIES

- Aamjiwnaang First Nation
- Bkejwanong: Walpole Island First Nation
- Community Living Sarnia-Lambton
- Conseil scolaire catholique Providence
- Conseil scolaire Viamonde
- EarlyON Child and Family Centres
- Erie St. Clair Local Health Integration Network
- Family Counselling Centre
- Kettle & Stony Point First Nation
- Lambton County Developmental Services
- Lambton County Preschool Speech and Language Program
- Lambton Kent District School Board
- Lambton Public Health
- Middlesex London Health Unit
- Pathways Health Centre for Children
- Sarnia-Lambton Children's Aid Society
- St. Clair Catholic District School Board
- St. Clair Child & Youth Services
- Thames Valley Children's Centre



## WHAT DOES IT MEAN TO BE FAMILY-CENTRED?

Family-centred recognizes that the family is the constant in the child's life, and they are the experts on the child's abilities and needs. The family works with service providers to make informed decisions about the services and supports the child and family receives. In family-centred service, the strengths and needs of **all** family members are considered. *CanChild 2003.*

### Coordinated Service Planning (CSP)

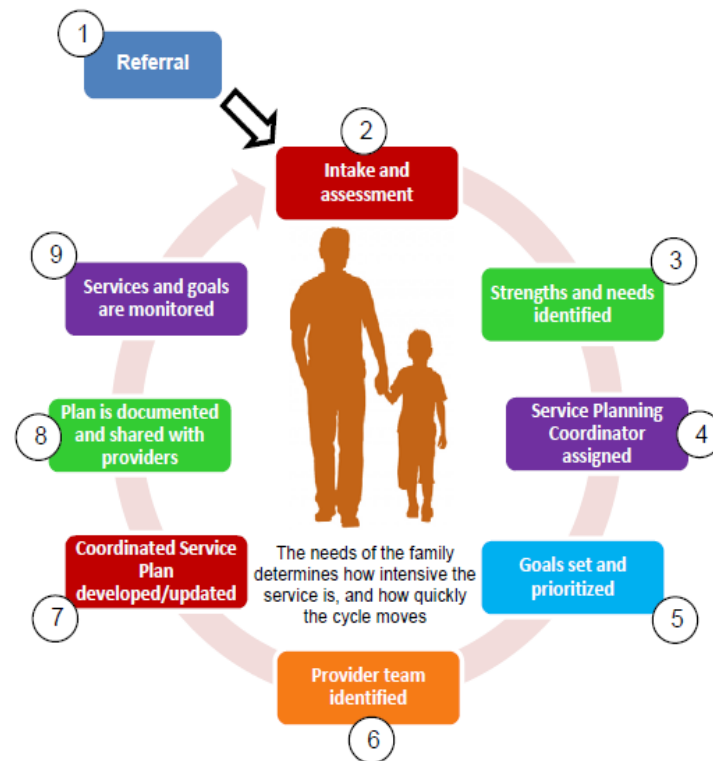
A key part of Ontario's Special Needs Strategy, Coordinated Service Planning builds on our existing foundation of family-centred, coordinated and effective care. Pathways Health Centre for Children, working with our community partners, was selected as the Lead Coordinating Agency for Sarnia-Lambton.



**Pathways Health Centre for Children**  
**1240 Murphy Road**  
**Sarnia, ON N7S 2Y6**  
**Phone (519) 542-3471**  
**Fax (519) 542-4115**  
[www.pathwayscentre.org](http://www.pathwayscentre.org)  
**1-855-542-3471**

# Coordinated Service Planning

**Sarnia-Lambton**



## A FAMILY-CENTRED APPROACH

## WHAT IS COORDINATED SERVICE PLANNING?

**Coordinated Service Planning (CSP)** is a family-centred approach to coordinating multi-sector services for families of children and youth with multiple and/or complex special needs.

CSP will support these families in three ways:

- 1) To access coordinated service planning for a range of services across sectors;
- 2) To have a Coordinated Service Planner to bring together service providers working with the identified child or youth; and
- 3) To develop one Coordinated Service Plan for each child/youth that illustrates the family and child/youth's goals, strengths and needs, as well as all of the services that the child/youth is and will be receiving.



### CSP VISION

The vision of the Special Needs Strategy is an Ontario where children and youth with special needs get the timely and effective services they need to participate fully at home, at school, in the community, and as they prepare to achieve their goals for adulthood.

Pathways Health Centre for Children (Pathways), and CSP Partner Agencies / District School Boards, will achieve this vision through the collective efforts of service providers, educators, and primary health care professionals in developing a dynamic, family-centred Coordinated Service Plan.



## HOW DOES CSP HELP FAMILIES?

- Families have a clear point of contact for Coordinated Service Planning (their Coordinated Service Planner);
- Families do not have to repeat their stories and goals to multiple providers;
- Families have a single Coordinated Service Plan that is responsive to their child/youth's goals, strengths, and needs;
- Families experience a family-centred process that recognizes that each family is unique; that the family is the constant in the child/youth's life; and that they have expertise on their child/youth's abilities and needs; and
- Families know that providers will be communicating about the needs and goals of their child/youth and will be working toward a set of common goals identified in the plan.



### CSP GOAL

**The goal of CSP in our community is to build on the coordination and collaboration we already experience in Sarnia-Lambton, to improve the service experience for all families of children and youth with multiple and/or complex special needs, to connect them to the various services they require as early as possible, and to monitor their needs and progress through a Coordinated Service Plan.**

## WHEN DID CSP START?

Coordinated Service Planning launched in our community in October 2017.



## HOW DO I ACCESS CSP?

Families can self refer by contacting Pathways directly at 519-542-3471; or families can be referred by any CSP partner agency in the community. Our community CSP partners will complete a screening scale with the family to determine their level of support from CSP, and the results will be forwarded to Pathways.



Pathways Health Centre for Children

1240 Murphy Road

Sarnia, ON N7S 2Y6

Phone (519) 542-3471

Fax (519) 542-4115

[www.pathwayscentre.org](http://www.pathwayscentre.org)

1-855-542-3471

