

POSSIBLE PARTNERS IN YOUR FAMILY'S CSP

-  Bkewanong: Walpole Island First Nation
-  Chatham-Kent Children's Services
-  Children's Treatment Centre of Chatham-Kent
-  Chatham-Kent Public Health
-  Community Living Chatham-Kent
-  Community Living Wallaceburg
-  Conseil scolaire catholique Providence
-  Delaware Nation of Moraviantown
-  Erie St. Clair Local Health Integration Network
-  Family Services Kent
-  Lambton Kent District School Board
-  Municipality of Chatham-Kent
-  Ontario Early Years & Family Centres
-  St. Clair Catholic District School Board
-  Thames Valley Children's Centre
-  Other relevant services for your family



Coordinated Service Planning (CSP)...

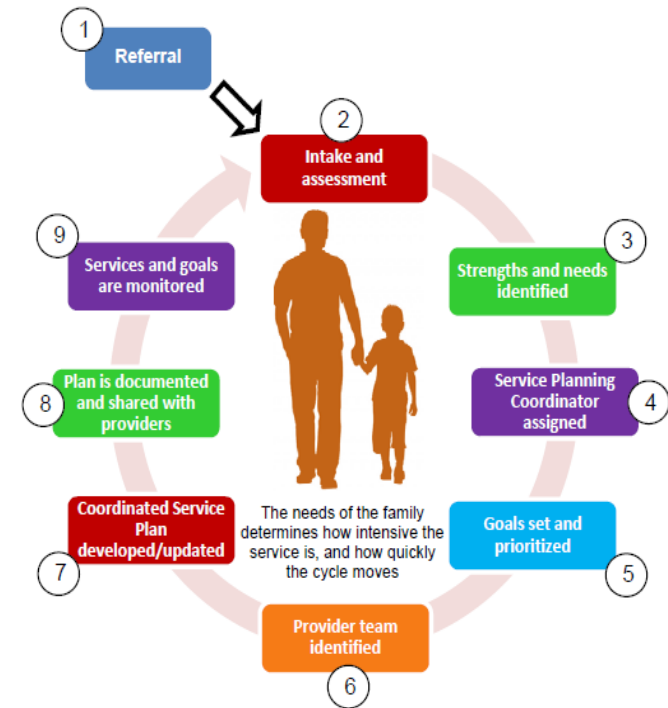
...is a key part of Ontario's Special Needs Strategy, Coordinated Service Planning builds on our existing foundation of family-centred, coordinated and effective care.

Working with our community partners, Children's Treatment Centre of Chatham-Kent was selected as the Coordinating Agency for Chatham-Kent.



Children's Treatment Centre
of Chatham-Kent
355 Lark St.
Chatham, ON N7L 5B2
Phone (519) 354-0520
Fax (519) 354-7355
www.ctc-ck.com

Coordinated Service Planning



A FAMILY-CENTRED APPROACH

WHAT IS COORDINATED SERVICE PLANNING?

Coordinated Service Planning (CSP) supports families of children and youth birth to 18 (or 21 if they are still in school) with multiple and/or complex special needs:

- ✿ A Service Planning Coordinator will bring together all service partners working with your child/youth and family;
- ✿ One Coordinated Service Plan will be developed for your child/youth;
- ✿ The plan is based on your family and child/youth goals, strengths and needs;
- ✿ The plan includes all services that your child/youth already receives and will receive in the future.



CSP VISION

The vision of the Special Needs Strategy is to:

- ✿ Improve the service experience for all families and children/youth with multiple and/or complex special needs;
- ✿ Connect your child/youth to the services they require as early as possible to participate fully at home, at school, in their community and as they prepare to achieve their goals for adulthood.
- ✿ The Children's Treatment Centre of Chatham-Kent, CSP Partner Agencies/District School Boards, will achieve this vision through the collective efforts of service providers, educators, and primary health care professionals in developing a dynamic, family-centred Coordinated Service Plan.

HOW WILL CSP HELP MY FAMILY?

You will:

- ✿ Have a Service Planning Coordinator who will be your primary point of contact for service planning;
- ✿ Not have to repeat your story and goals to multiple providers;
- ✿ Work with us to create a single Coordinated Service Plan that is responsive to your child/youth's goals, strengths, and needs;
- ✿ Know that service providers will be communicating about the needs and goals of your child/youth and will be working toward a set of common goals identified in the plan.

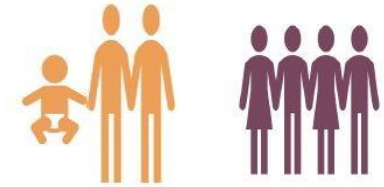


WHAT DOES IT MEAN TO BE FAMILY-CENTRED?

In family-centred service, the strength and needs of all family members are considered. The family works with service providers to make informed decisions about the services and supports their child and family receives.

We recognize that:

- ✿ your family is unique;
- ✿ your family plays the most important role in your child/youth's life;
- ✿ you have expertise about your child/youth's abilities and needs.



HOW DO I ACCESS CSP?

- ✿ You can self-refer by contacting Children's Treatment Centre of Chatham-Kent (CTC-CK);
- ✿ A family can be referred by any CSP partner agency in the community. Our community partners complete a referral form with your family and forward to the Children's Treatment Centre of Chatham-Kent. You will be contacted to complete an Intake.

Children's Treatment Centre of Chatham-Kent

355 Lark St.

Chatham, ON N7L 5B2

Phone (519) 354-0520

Fax (519) 354-7355

www.ctc-ck.com

