



**ST. CLAIR CATHOLIC
DISTRICT SCHOOL BOARD**

Lighting the Way ~ Rejoicing in Our Journey

**REQUEST FOR TENDER
FOR
ST. MATTHEW PARKING LOT EXPANSION**

RFT #: 652-1833

ADDENDUM #1

Site Meeting & Closing Date

DUE DATE: April 19th, 2018 at 1:00:00p.m., Local Time

Mailing Address:

Mr. Tony Prizio
Purchasing Department
St. Clair Catholic District School Board
420 Creek Street
Wallaceburg, ON
N8A 4C4

ADDENDUM, QUESTIONS & ANSWERS

This addendum forms part of the Contract Documents.

ADDENDUM #1

A1. Additional - Mandatory Site Examination and Bidder Briefing Scheduled

Site Examination and Bidders' Briefing

An Additional Mandatory Site Examination and Bidder's Briefing has been scheduled for **Tuesday April 10th 2018 beginning at 3:30p.m.** All interested parties will meet at the main entrance of St. Matthew Catholic School, 720 Elm Avenue, Sarnia, Ontario. All General Contractors are invited. Attendance will be taken and will form part of the tender record as issued in Addendum #2.

Tuesday April 3rd 2018 beginning at 3:30p.m. - CANCELLED

A2. Instruction to Bidders - Tender Closing - Date Change

Replace Section 1.03 Bid Documents, paragraph .4

.4 Bids shall be received no later than **1:00 p.m. on Thursday, April 19th, 2018**, local time as indicated on the time clock of the SCCDSB Reception.

The Bid proposal shall be delivered to:

St Clair Catholic District School Board Facility Services,
1930 Wildwood Drive,
Bright's Grove, Ontario
Attn: Tony Prizio, Procurement Specialist

A3. Architectural Drawings

Replace drawing A010 with attached drawing A010, Issued for Addendum 001

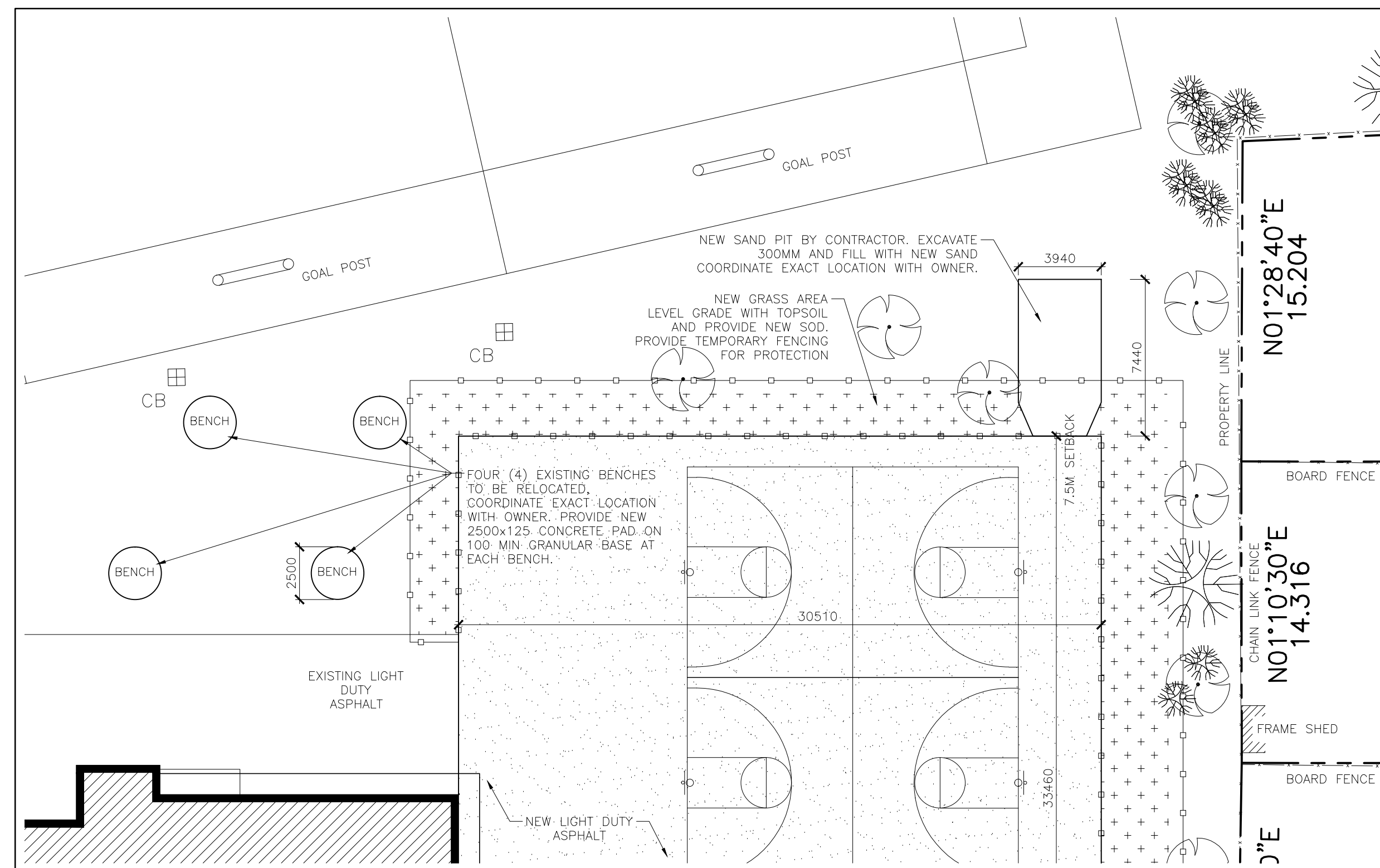
A4. Civil Drawings

Replace drawing 1 of 3 Site Plan – Removals with attached drawing 1 of 3 Site Plan – Removals, Issued for General Revisions

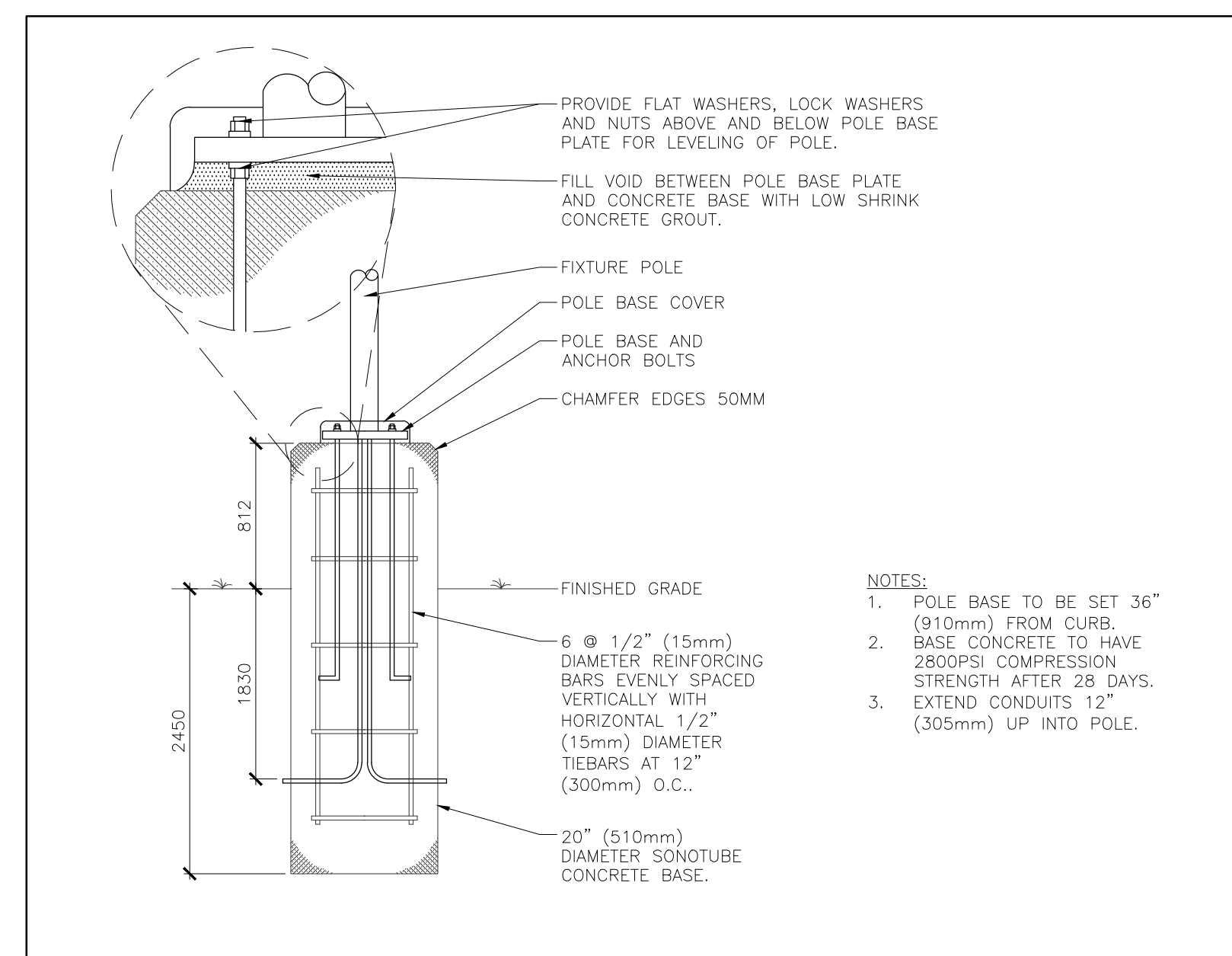
Replace drawing 2 of 3 Site Plan – Servicing and Grading with attached drawing 2 of 3 Site Plan – Servicing and Grading, Issued for General Revisions

Replace drawing 3 of 3 Details with attached drawing 3 of 3 Details, Issued for General Revisions

This concludes addendum #1.



2 PART SITE PLAN
SCALE 1:200



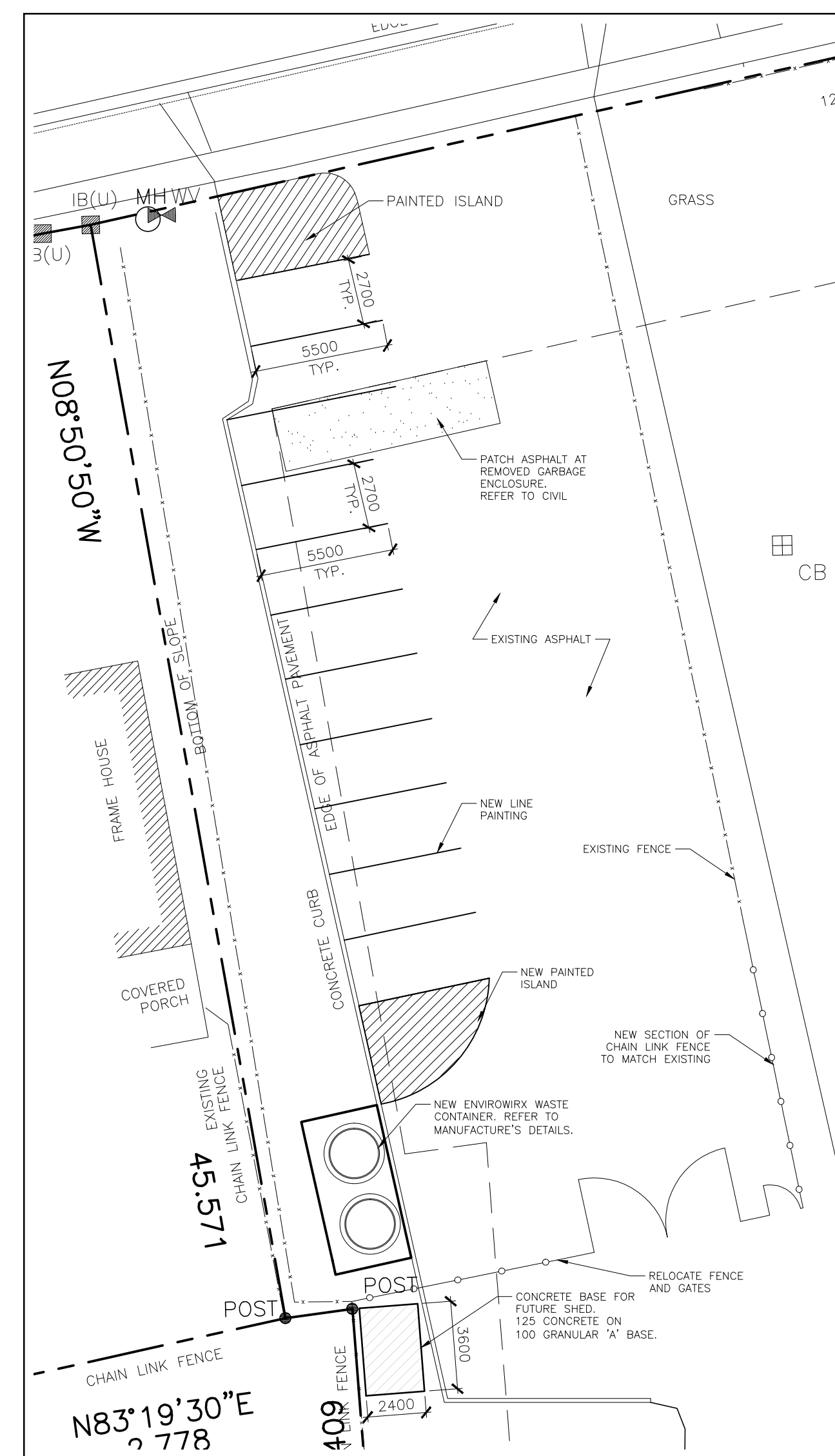
4 POLE BASE DETAIL
SCALE 1:20

DETAILS OF DEVELOPMENT, ST. MATTHEW CATHOLIC SCHOOL
720 ELM AVE, SARNIA, ON N7T 4H3

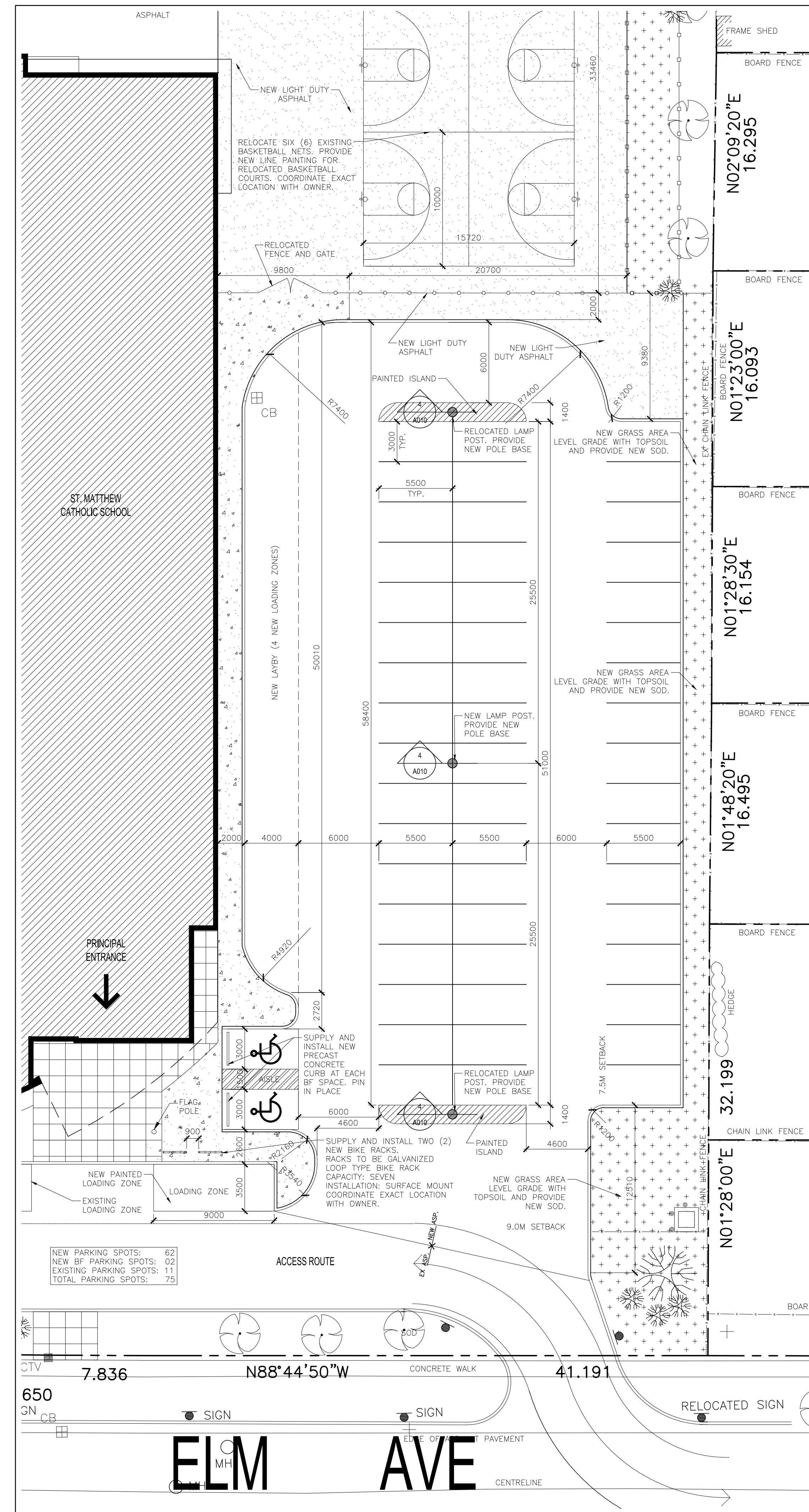
ZONING	UR1 CHURCHES & SCHOOLS	REQUIRED	PROVIDED
DATA			
LOT AREA		0.07 ha	2.177 ha
LOT FRONTAGE		23 m	148.25 m
SETBACKS			
FY		9 m	17 m
RY		7.5 m	62 m
SY		6 m	14 m
EXISTING BUILDING AREA		4,413.00 m ²	4,413.00 m ²
BUILDING HEIGHT		12.0 m MAXIMUM	6.6 m
LOT COVERAGE		35% MAXIMUM	21%
LANDSCAPED OPEN SPACE		40% MINIMUM	49.8%
PARKING			
1/5 CLASSROOM		27 SPACES	71 SPACES
1.5 X 18 = 27 PARKING SPACES MIN.			
BARRIER FREE PARKING (25-99 SPACES)		2 SPACES	2 SPACES
LOADING AREA (OVER 4000 m ² BUILDING)		3 SPACES	6 SPACES

DETAILS OF DEVELOPMENT, ST. MATTHEW CATHOLIC SCHOOL
720 ELM AVE, SARNIA, ON N7T 4H3

ZONING	UR1 CHURCHES & SCHOOLS	REQUIRED	PROVIDED
DATA			
LOT AREA		0.07 ha	2.177 ha
LOT FRONTAGE		23 m	148.25 m
SETBACKS			
FY		9 m	17 m
RY		7.5 m	62 m
SY		6 m	14 m
EXISTING BUILDING AREA		4,413.00 m ²	4,413.00 m ²
BUILDING HEIGHT		12.0 m MAXIMUM	6.6 m
LOT COVERAGE		35% MAXIMUM	21%
LANDSCAPED OPEN SPACE		40% MINIMUM	49.8%
PARKING			
1/5 CLASSROOM		27 SPACES	71 SPACES
1.5 X 18 = 27 PARKING SPACES MIN.			
BARRIER FREE PARKING (25-99 SPACES)		2 SPACES	2 SPACES
LOADING AREA (OVER 4000 m ² BUILDING)		3 SPACES	6 SPACES



3 PART SITE PLAN
SCALE 1:200



1 PART SITE PLAN
SCALE 1:200

NOTES

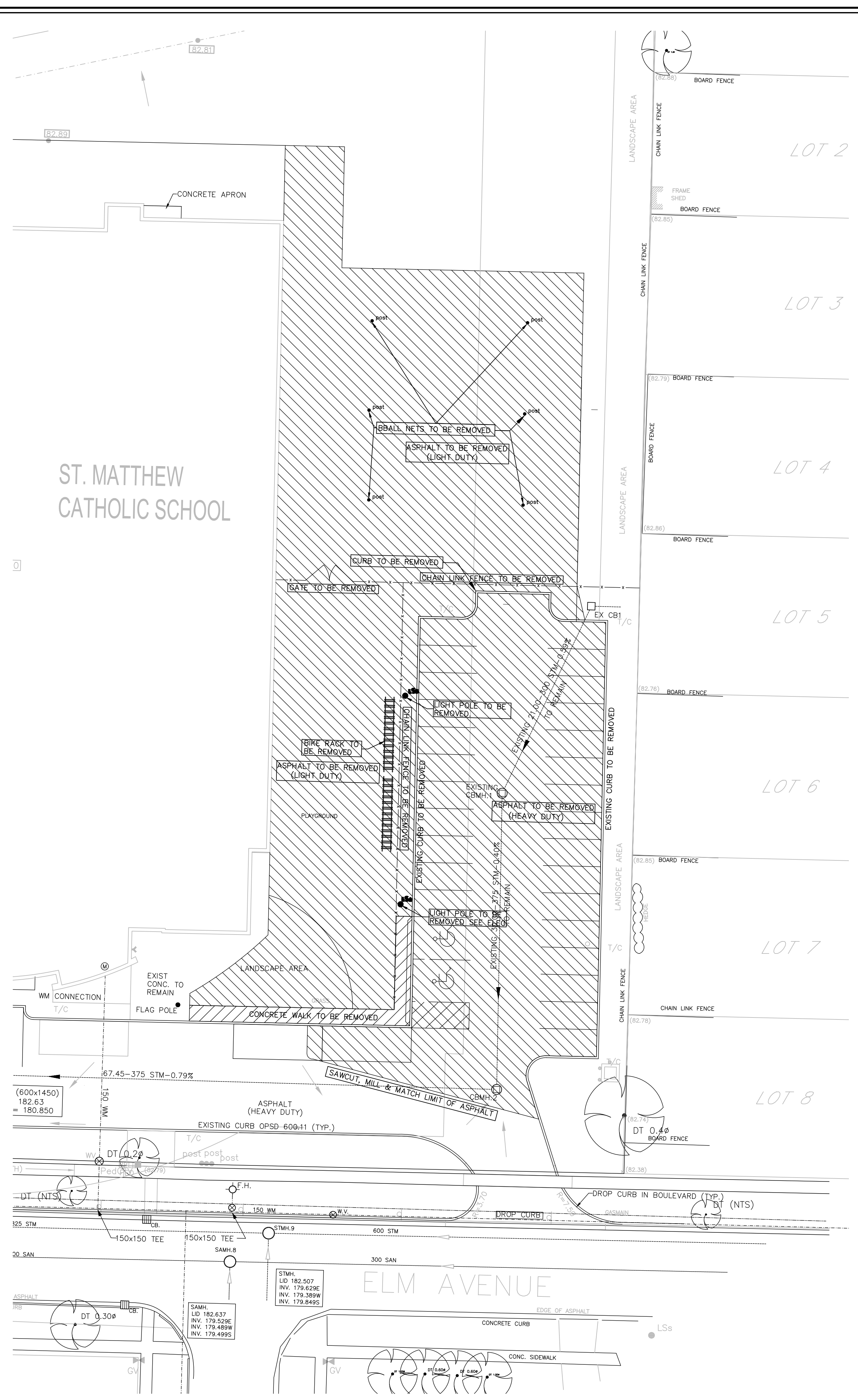
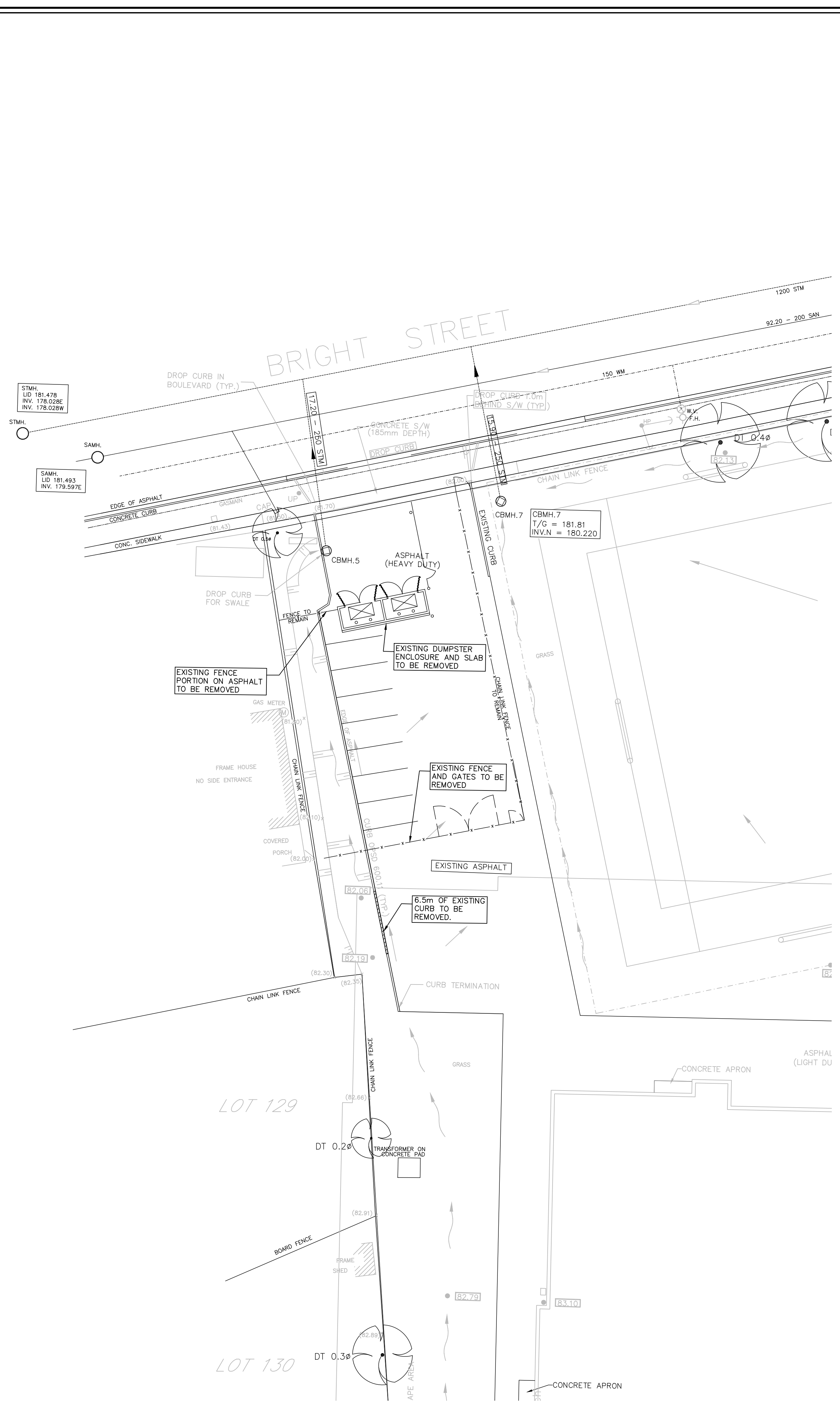
LEGEND

DATE	DESCRIPTION	No.
04/04/2018	ISSUED FOR ADDENDUM 001	2
03/22/2018	ISSUED FOR TENDER	1

PROJECT TITLE:
ST. MATTHEW CATHOLIC SCHOOL PARKING EXPANSION

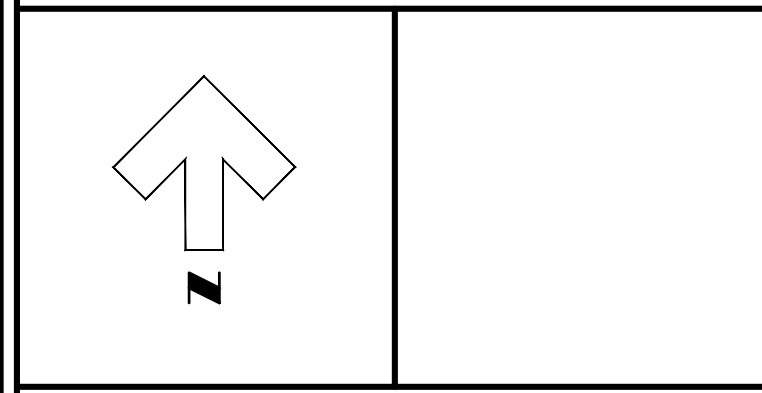
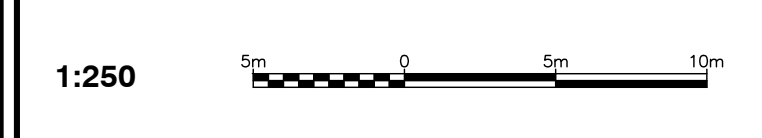
DRAWING TITLE:
PART SITE PLANS ZONING DETAILS OF DEVELOPMENT

DATE PLOTTED:	DRAWN:	DRAWING No.
04/04/2018 3:46 PM	MFPJ	
SCALE:	CHECKED:	A010
AS NOTED	RRW	
PROJECT No.		1744



LEGEND

--- SAN. or STM.	EXISTING SEWERS, SANITARY or STORM
--- MH. CB.	MANHOLE and CATCHBASIN
--- W.	WATERMAIN
--- G.	GASMAIN
--- T.	UNDERGROUND TELEPHONE
--- H.	UNDERGROUND HYDRO
--- T.V.	UNDERGROUND T.V. CABLE
--- U.P.	UTILITY POLES
--- GRUBBING	GRUBBING
--- REMOVE EXISTING CONC. SIDEWALK AND DRIVES	REMOVE EXISTING CONC. SIDEWALK AND DRIVES
--- PLACE TOPSOIL AND SOG	PLACE TOPSOIL AND SOG
--- PLACE CONC. SIDEWALK AND DRIVES	PLACE CONC. SIDEWALK AND DRIVES
--- REMOVE EXISTING ASPHALT PAVT	REMOVE EXISTING ASPHALT PAVT
--- PLACE HOT MIX ASPHALT	PLACE HOT MIX ASPHALT
--- EXISTING GRANULAR BASE TO REMAIN	EXISTING GRANULAR BASE TO REMAIN



NOTE
The locations of existing underground utilities are shown in an approximate way only and have not been independently verified by the owner or its representative. The contractor shall determine the exact location of all existing utilities before commencing work and agrees to be fully responsible for any damages which might be occasioned by the contractor's failure to exactly locate and preserve any and all underground utilities.

BENCHMARK INFORMATION
B.M. Elevation: 183.572
Top of spindle of fire hydrant in front of principle school entrance.

BENCHMARK INFORMATION

Design By: B.K. / D.S. Checked By: G.C.B.



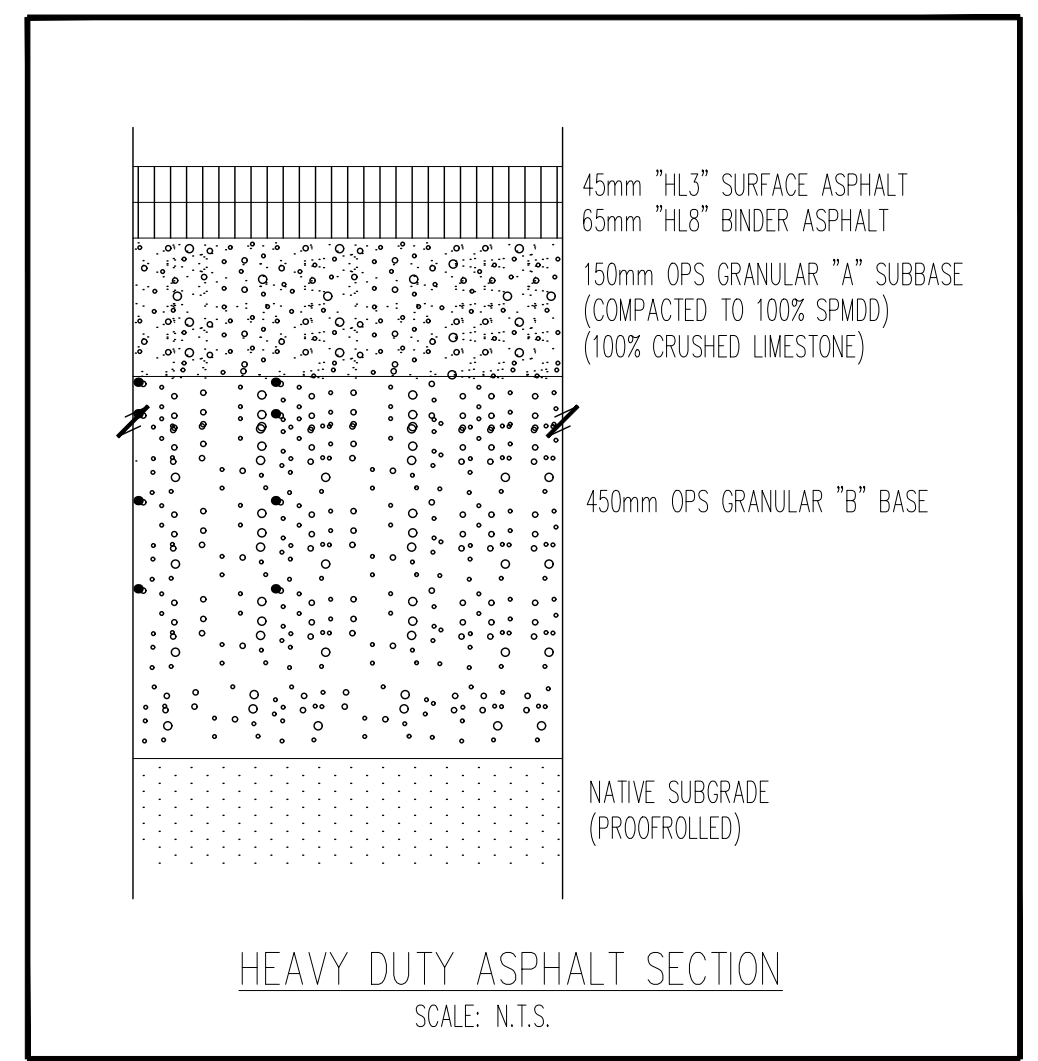
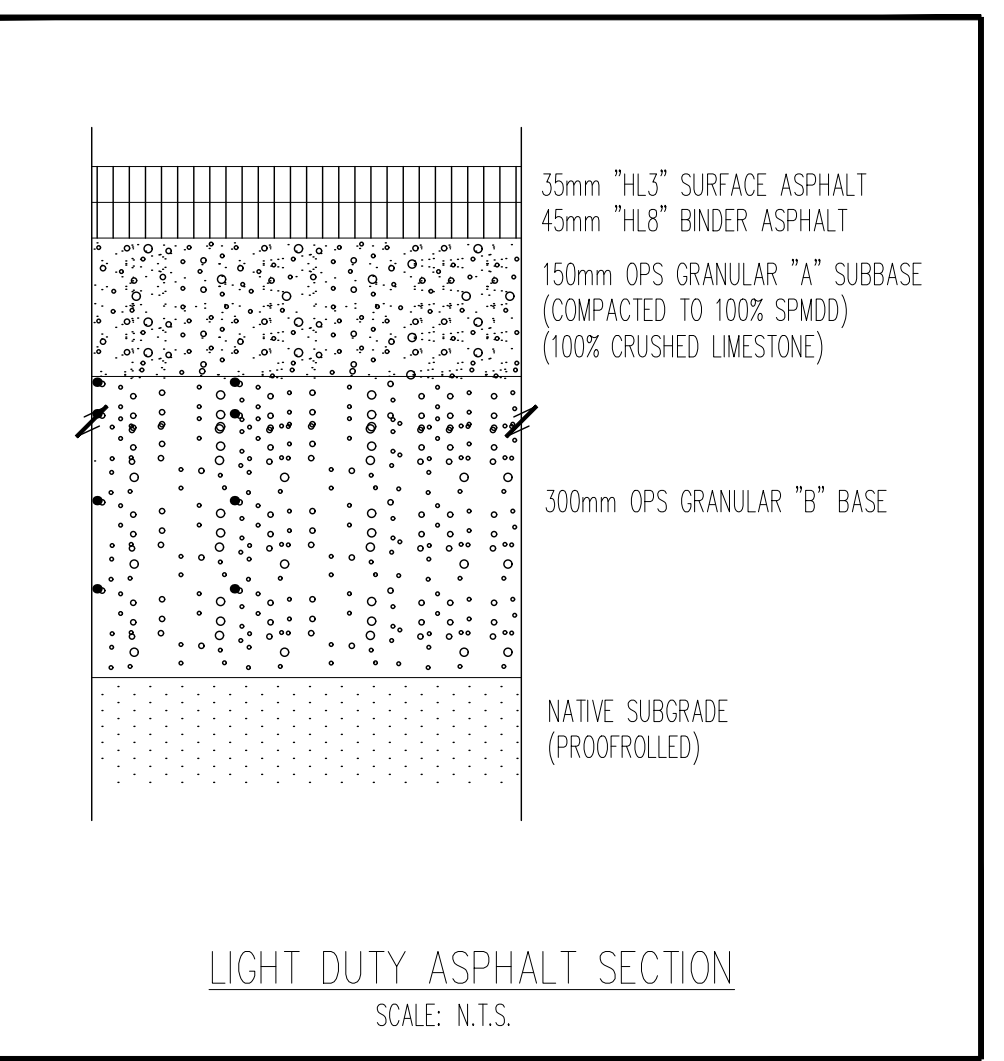
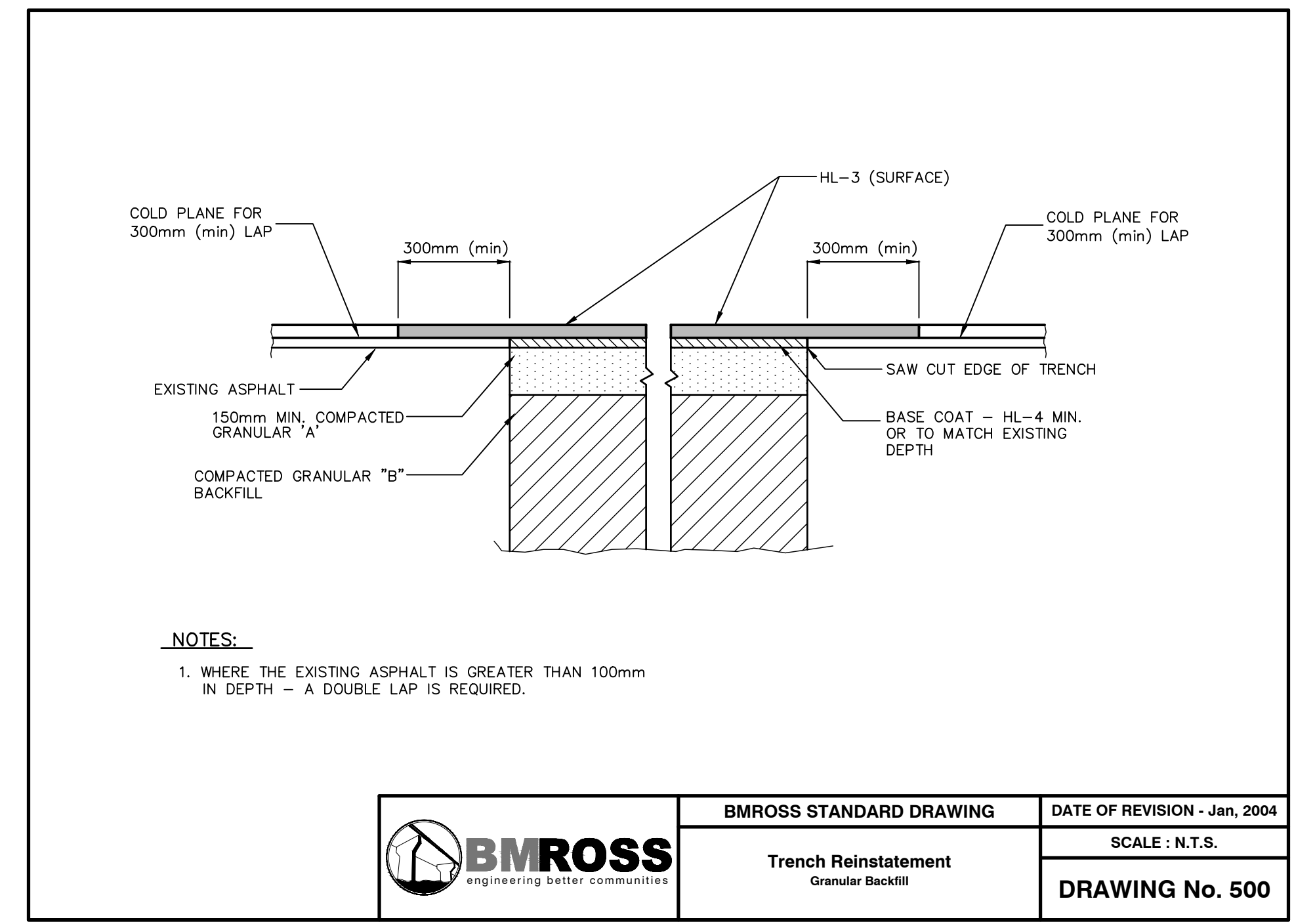
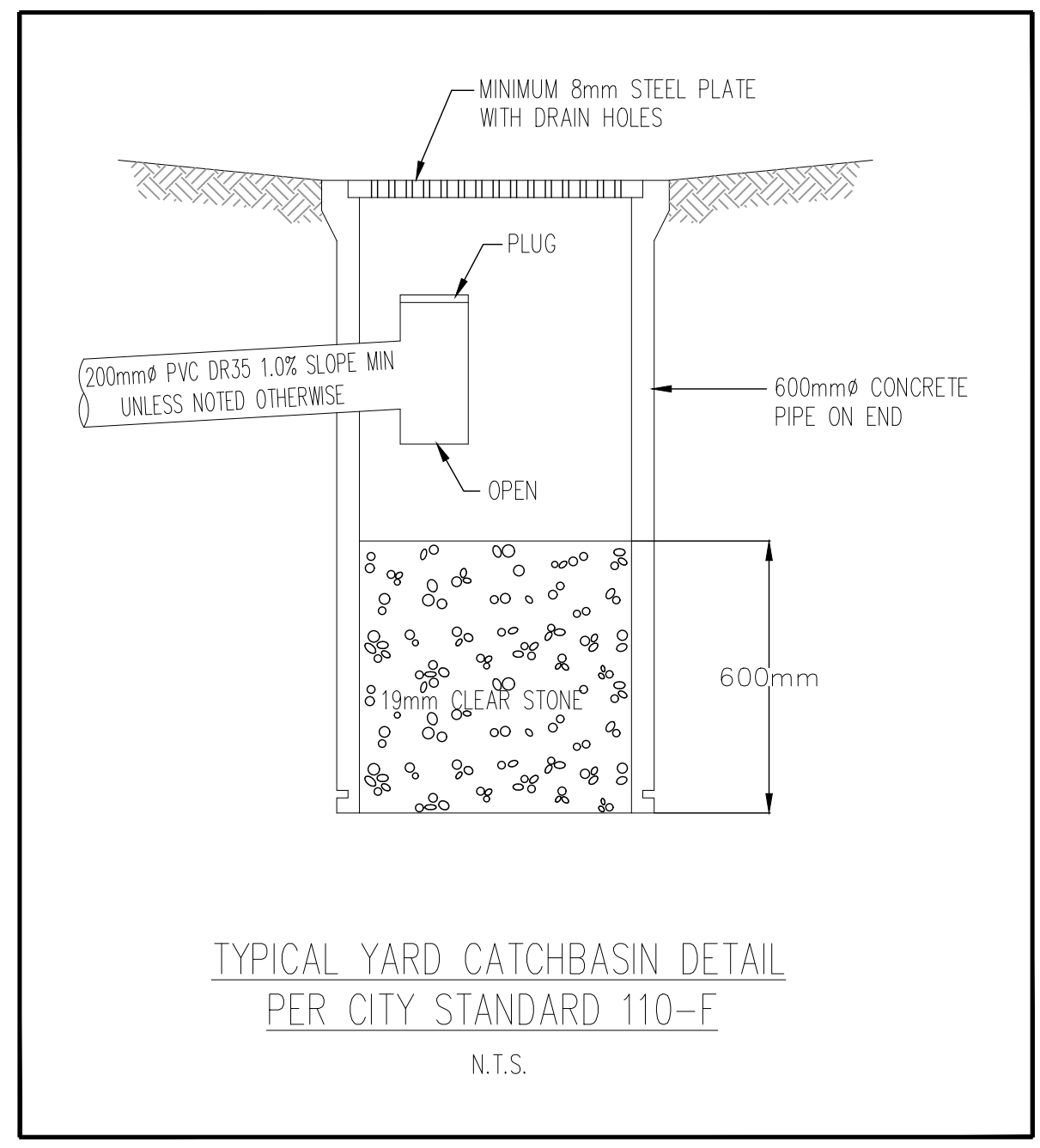
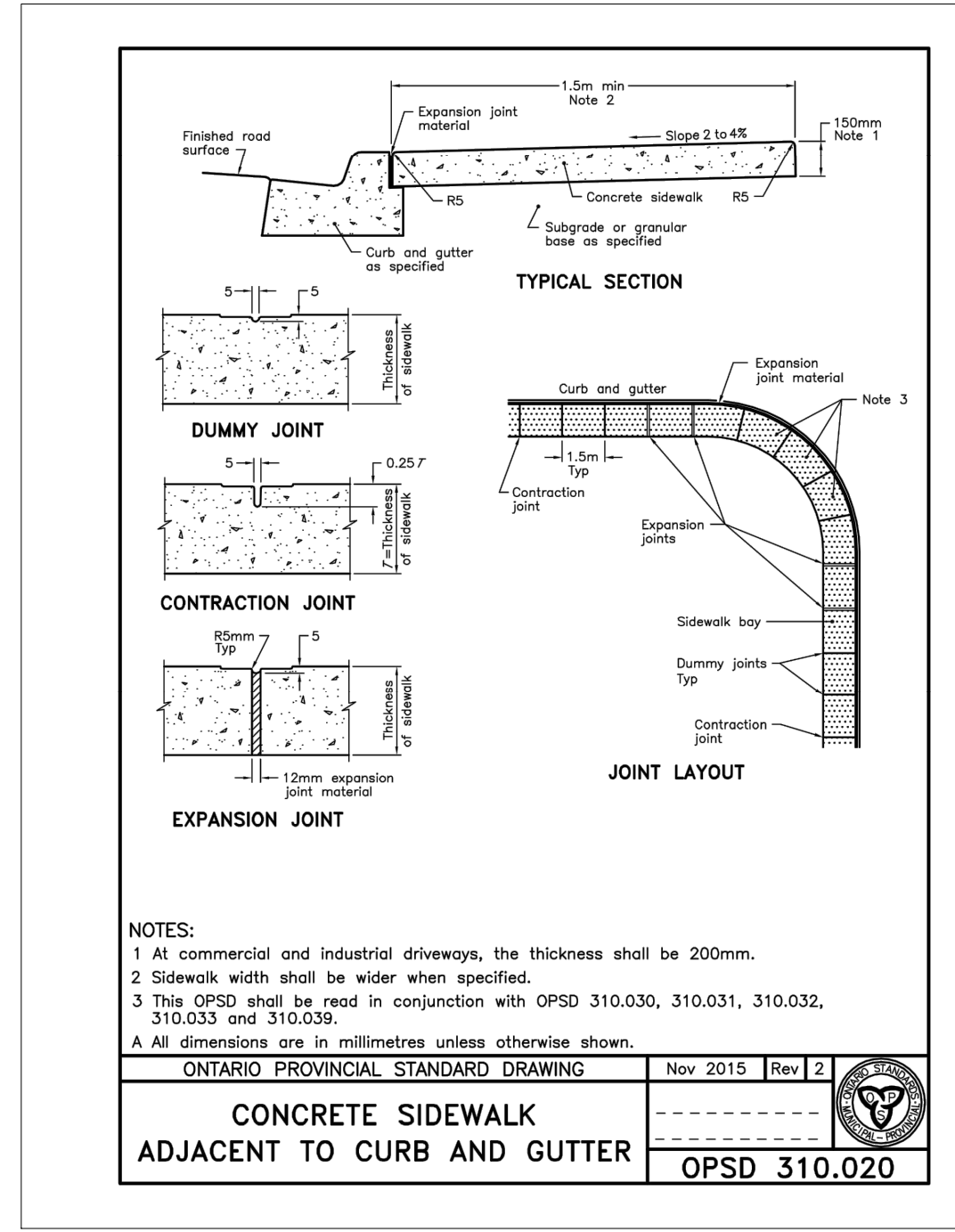
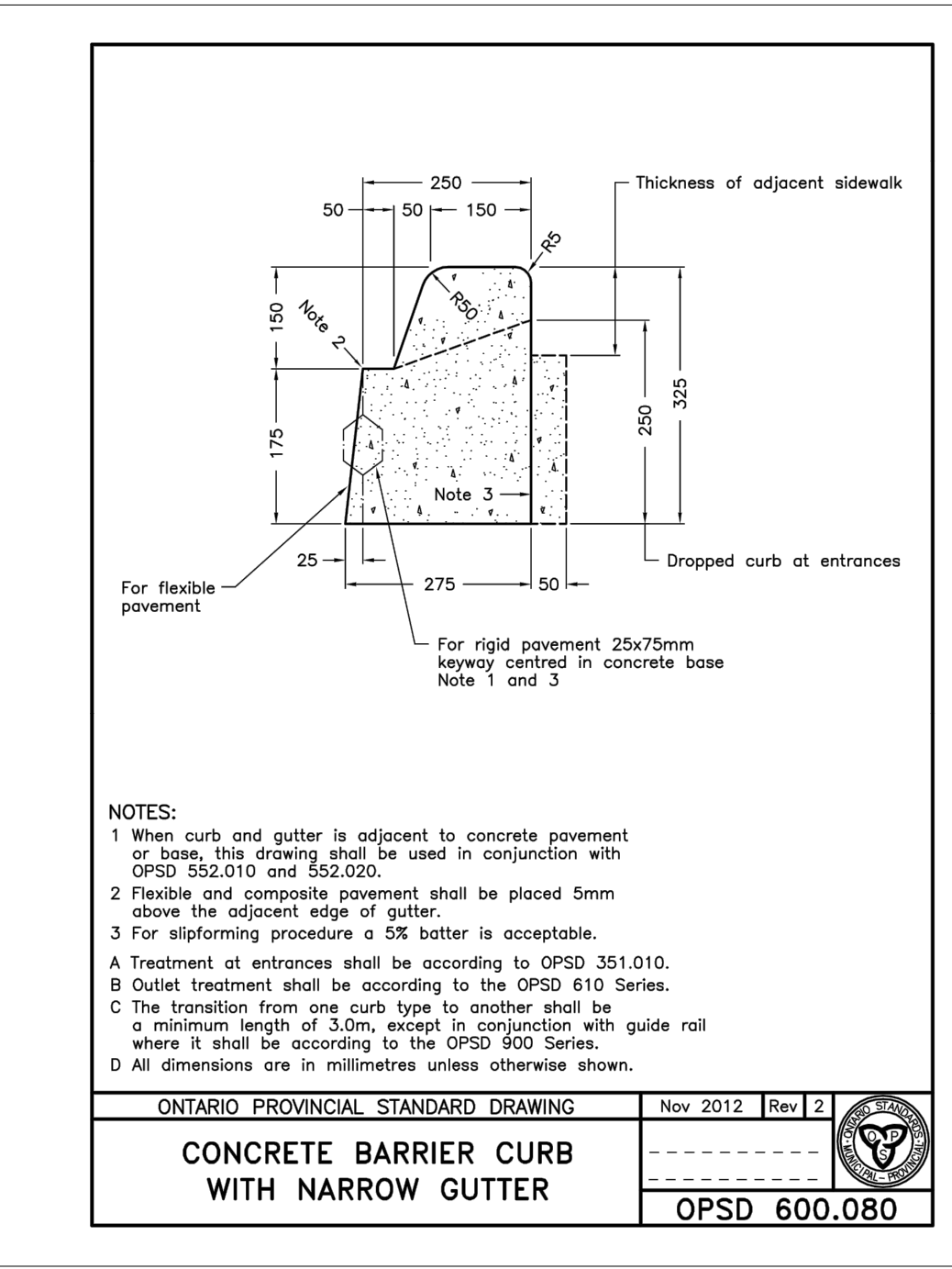
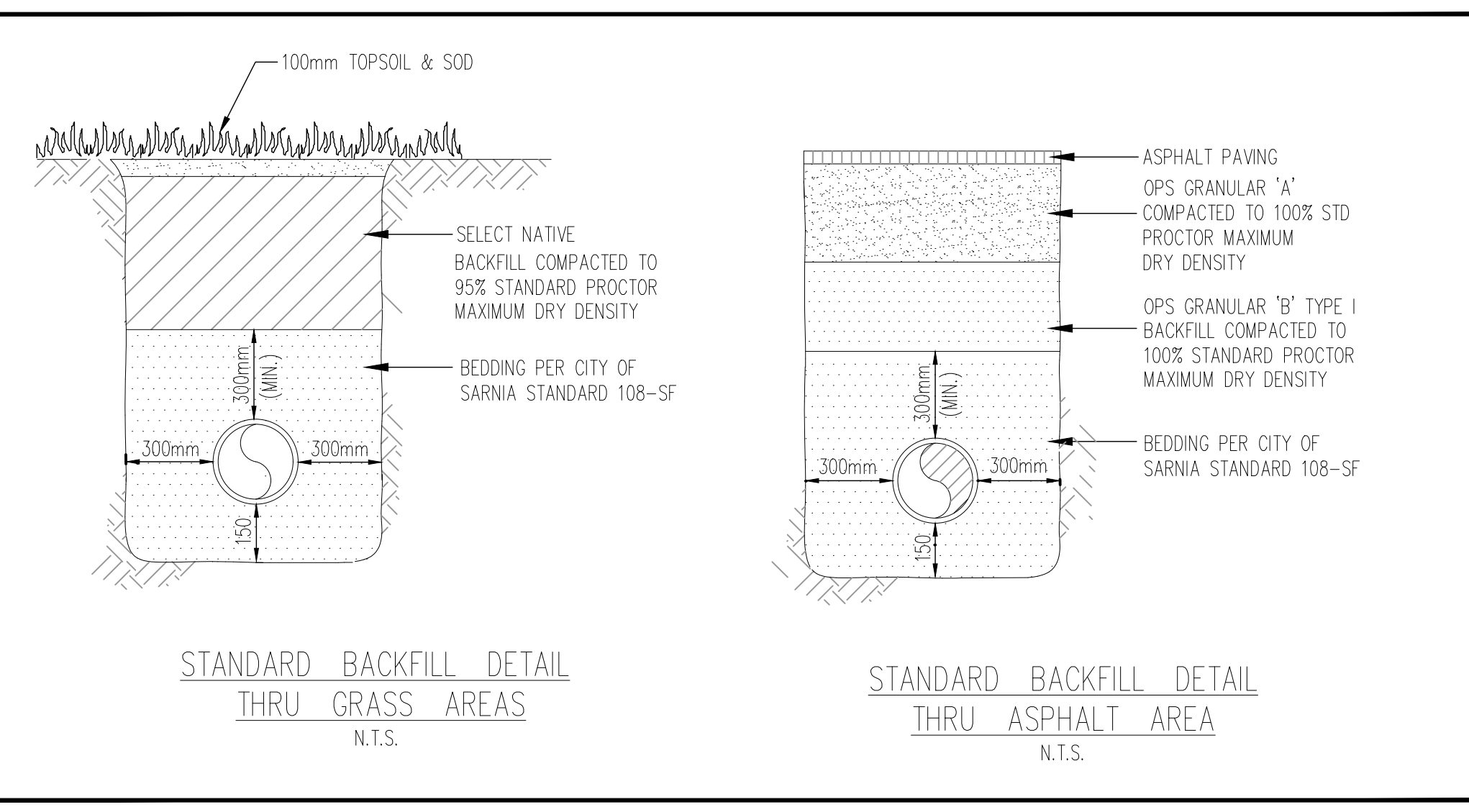
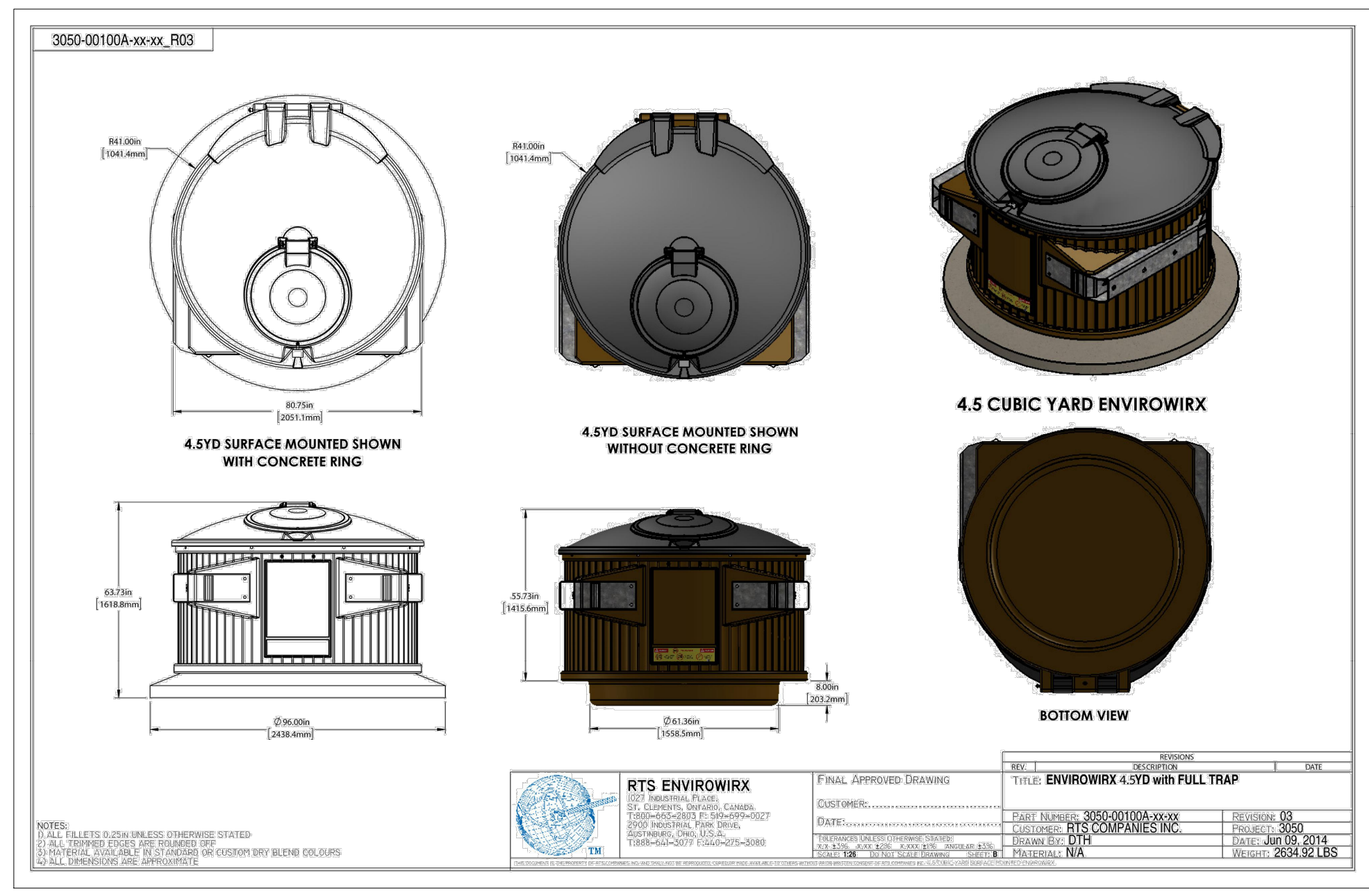
No.	DATE	REVISION
1	Feb. 18	Preliminary
2	March 2018	For Approval
3	March 2018	For Tender
4	April 2018	General Revision



Goderich Mount Forest Sarnia

St. Matthew Catholic School (Sarnia) Site Plan
Removals

Contract No.	Project No. 17323
Scale 1:250	Drawing No. 1 of 3



- NOTES:**
- IT IS THE CONTRACTOR'S RESPONSIBILITY PRIOR TO CONSTRUCTION TO INVESTIGATE AND VERIFY FOR HIMSELF THE LOCATIONS OF ALL EXISTING MUNICIPAL AND PRIVATE SERVICES AND UTILITIES WHICH MAY AFFECT THE WORK WHETHER OR NOT INDICATED ON THE DRAWINGS.
 - THE CONTRACTOR SHALL REFER TO THE ARCHITECTURAL DRAWINGS FOR ALL BUILDING AND SITE DIMENSIONS
 - ALL WORK SHALL BE COMPLETED IN ACCORDANCE WITH THE LATEST REVISION OF THE ONTARIO PROVINCIAL STANDARD SPECIFICATIONS AND CITY OF SARNIA SPECIFICATIONS AND DRAWINGS WEBSITE: <http://www.sarnia.ca/doing-business/engineering/2018-standard-specifications>
 - GENERAL CONTRACTOR OR APPROPRIATE SUB-TRADE SHALL BE RESPONSIBLE FOR NOTIFYING THE FOLLOWING PEOPLE AT LEAST 2 WORKING DAYS PRIOR TO COMMENCEMENT OF CONSTRUCTION:
 - THE CITY OF SARNIA ENGINEERING DEPARTMENT
 CONTACT: BRENDA LUPI AT 519-332-0330 ext 3355
 CONTACT: JAY VANVLYMEN AT 519-332-0330 ext 3282
 - THE ENGINEERING CONSULTANT BM ROSS AT 519-908-9564
 - ANY WORK REQUIRED WITHIN THE CITY RIGHT-OF-WAY SHALL CONFORM TO ONTARIO TRAFFIC MANUAL BOOK 7 AND (2) TRAFFIC CONTROL PLANS.
 - CONTRACTOR SHALL CONDUCT PRE-CONSTRUCTION MEETING BEFORE STARTING ANY WORK ONSITE.

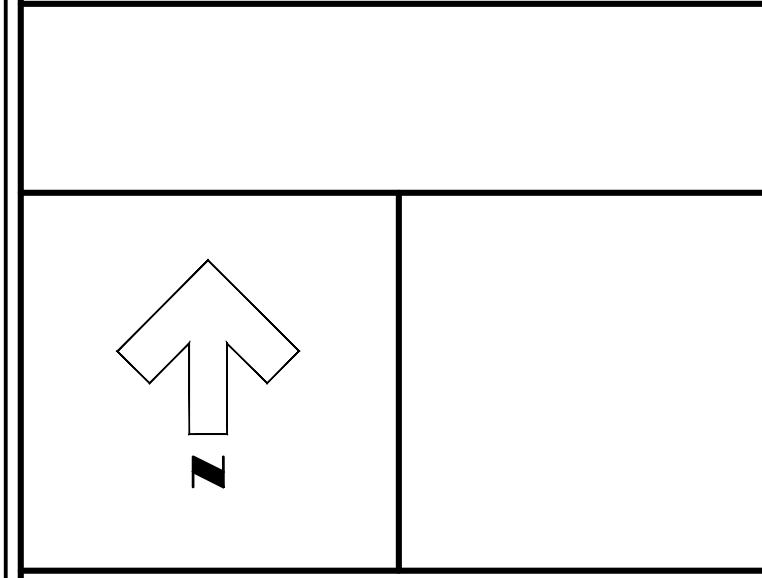
- REMOVALS (SEE REMOVALS PLAN):**
- REMOVE AND DISPOSE OF EXISTING CONCRETE, CURBS AND GRANULAR BASE MATERIALS OFF-SITE.
 - REMOVE EXISTING CURB AT PROPOSED ENVIROWIRX DUMPSTER LOCATION.
 - SEE DRAWING 1 OF 3 FOR ALL REMAINING REMOVAL ITEMS. ALL REMOVALS SHALL BE DONE IN ACCORDANCE WITH OPSS 510
 - HEAVY-DUTY ASPHALT
 - REMOVE AND DISPOSE OF EXISTING ASPHALT FROM HEAVY-DUTY PAVEMENT AREA IN EXISTING PARKING LOT. HEAVY-DUTY GRANULAR BASE TO REMAIN. RESHAPE SURFACE TO PROPOSED GRADES.
 - LIGHT-DUTY ASPHALT
 - REMOVE AND DISPOSE OF EXISTING ASPHALT FROM LIGHT-DUTY PAVEMENT AREA IN EXISTING PLAYGROUND AREA. LIGHT-DUTY GRANULAR BASE TO BE REMOVED AND DISPOSED OF OFF SITE.

- STORM SEWER NOTES:**
- STORM SEWERS SHALL BE PVC DR35 AND INSTALLED IN ACCORDANCE WITH OPSS 410.
 - STORM CATCH BASINS SHALL BE INSTALLED IN ACCORDANCE WITH OPSS 407.
 - PROVIDE NEW CATCHBASINS IN PAVED AREAS PER OPSD-705.010 WITH FRAME AND GRATE PER OPSD-400.020 WITH 'FISH' STYLE COVER PER OPSD-401.081. YARD CATCHBASIN IN LANDSCAPED SWALE SHALL BE AS PER CITY OF SARNIA STANDARD 110-F.
 - PROVIDE (2)-3m LONG 150mm PERFORATED SUBDRAINS c/w FILTER SOCK AT ALL CATCHBASINS IN PAVED AREAS.
 - PIPE BEDDING FOR SEWERS AS PER CITY OF SARNIA STD. 108-SF.
 - TRENCH BACKFILL IN ASPHALT AND GRASS AREAS AS PER DETAIL THIS PAGE.
 - SWALE SHALL BE SHAPED ALONG EAST SIDE OF PLAYGROUND ASPHALT c/w 150mm PERFORATED SUBDRAIN INSTALLED 300mm BELOW CENTER OF SWALE GRADE. 150mm PERFORATED SUBDRAIN SHALL CONNECT TO NEW YARD CATCH BASIN. SWALE SURFACE SHALL BE 150mm TOPSOIL AND SOD.

- PAVEMENTS, CURBS, SIDEWALKS, AND MISC ITEMS:**
- PAVEMENT OVER APPROVED SUBGRADE SHALL BE AS PER HEAVY-DUTY AND LIGHT-DUTY DETAILS ON THIS DRAWING.
 - SAWCUT AND MILL STEPPED JOINT AT ALL TIE-IN LOCATIONS PER BMROSS DETAIL No. 500
 - ALL SITE CURBING SHALL BE AS PER OPSD-600.080
 - GRASS AREAS SHALL BE RESTORED WITH MIN. 150mm TOPSOIL AND SOD.
 - BARRIER FREE PARKING SIGNS & POSTS TO BE INSTALLED IN THE MIDDLE OF PARKING SPACES INCLUDING PARKING LINES & PAVEMENT PAINTED BLUE c/w GLASS BEADS AND BARRIER FREE SYMBOL.
 - PROVIDE PEGGED CONCRETE PRECAST CURB STONES AT END OF EACH BARRIER FREE PARKING SPACE.
 - CONTRACTOR SHALL SUBMIT MIX DESIGN FOR ASPHALT FOR REVIEW AND APPROVAL BY GEOTECHNICAL ENGINEER PRIOR TO CONSTRUCTION.
 - EXISTING CONCRETE DUMPSTER AREA IN BRIGHT STREET PARKING AREA SHALL BE REMOVED AND EXCAVATED TO DESIGN SUBGRADE AND REPLACED WITH HEAVY DUTY ASPHALT AS PER DETAIL THIS PAGE.
 - ANY DAMAGE TO ASPHALT CAUSED BY REMOVAL OF FENCE POSTS IN BRIGHT STREET PARKING AREA SHALL BE REPAIRED TO MATCH EXISTING.
 - EXCAVATE FOR AND INSTALL ENVIROWIRX DUMPSTERS PER MANUFACTURERS SPECIFICATIONS
 - PLACE 6.4m x 3.4m x 200mm THICK CONCRETE PAD AROUND ENVIROWIRX DUMPSTERS
 - BACKFILL AND RESTORE GRASS AROUND ENVIROWIRX DUMPSTERS AND GRADE TO EXISTING SWALE
 - CONCRETE SIDEWALKS ALONG DROP OFF LANE AND BARRIER FREE PARKING SHALL BE 125mm THICK CONCRETE ON MIN. 100mm GRANULAR 'A' BASE AS PER CITY OF SARNIA SPEC DIV 4.3 AND CITY OF SARNIA STANDARD DRAWING 112-F.
 - SAWCUT AND MATCH EXISTING CONCRETE ENTRANCE SLAB AT TIE-IN POINT.
 - CHAINLINK FENCE AND GATES SHALL BE INSTALLED IN ACCORDANCE WITH OPSS 772, OPSD-972.102, AND OPSD-972.130 AT 1.2m AND 1.8m HIGH c/w TOP RAIL.
 - PROVIDE PAVEMENT MARKINGS FOR PARKING SPACES AND HATCHED TRAFFIC ISLANDS WHERE INDICATED IN ACCORDANCE WITH OPSS-710 AND CITY OF SARNIA STANDARDS.

LEGEND

--- SAN. or STM. ---	EXISTING SEWERS, SANITARY or STORM
--- MH. CB. ---	MANHOLE and CATCHBASIN
--- WATERMAIN ---	FIRE HYDRANT
--- GASMAIN ---	UNDERGROUND TELEPHONE
--- UNDERGROUND TELEPHONE ---	UNDERGROUND HYDRO
--- UNDERGROUND HYDRO ---	UNDERGROUND TV. CABLE
--- UNDERGROUND TV. CABLE ---	UTILITY POLES
--- UTILITY POLES ---	GRUBBING
--- GRUBBING ---	REMOVE EXISTING CONC. SIDEWALK AND DRIVES
--- REMOVE EXISTING CONC. SIDEWALK AND DRIVES ---	PLACE TOPSOIL AND SOD
--- PLACE TOPSOIL AND SOD ---	PLACE CONC. SIDEWALK AND DRIVES
--- PLACE CONC. SIDEWALK AND DRIVES ---	REMOVE EXISTING ASPHALT PAVT
--- REMOVE EXISTING ASPHALT PAVT ---	PLACE HOT MIX ASPHALT
--- PLACE HOT MIX ASPHALT ---	EXISTING GRANULAR BASE TO REMAIN
--- EXISTING GRANULAR BASE TO REMAIN ---	



NOTE
 The locations of existing underground utilities are shown in an approximate way only and have not been independently verified by the owner or its representative. The contractor shall determine the exact location of all existing utilities before commencing work and agrees to be fully responsible for any damages which might be occasioned by the contractor's failure to exactly locate and preserve any and all underground utilities.

BENCHMARK INFORMATION
 B.M. Elevation 183.572
 Top of spindle of fire hydrant in front of principle school entrance.

BENCHMARK INFORMATION

Design By: B.K. / D.S. Checked By: G.C.B.

No.	DATE	REVISION
1	Feb. 18	Preliminary
2	March 2018	For Approval
3	March 2018	For Tender
4	April 2018	General Revision

BMROSS
 engineering better communities
 Goderich Mount Forest Sarnia

St. Matthew Catholic School (Sarnia)

Details

Contract No.	Project No.
	17323
Scale	Drawing No.
N.T.S.	3 of 3