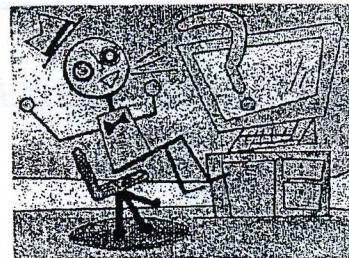


Helpful Hints for Using Dragon?

(Amethyst Provincial Demonstration School)



- Is your microphone plugged in the right spot?
- Is your microphone turned on?
- Is the mute button turned off on the computer?
- Do you have the microphone in the correct position?
- Do you place your microphone in the same place each day?
- Did you select your user file?
- Are you speaking clearly?
- Are you saying the endings of words?
- Are you speaking too fast or too slowly?
- Are you turning off the mike when you need to stop for a moment?
- Are you correcting misused words using "Correct That" "Spell That" and "Train"?
- Are you saving your speech files?

Remember... It is only a computer! It does not have a brain like a human does! It needs to be taught to do the right thing!

THE MORE YOU TRAIN, THE BETTER THE COMPUTER WILL UNDERSTAND YOU.