



**ST. CLAIR CATHOLIC**  
**DISTRICT SCHOOL BOARD**  
*Lighting the Way ~ Rejoicing in Our Journey*

---

***ADDENDUM # 002***

---

**St. Clair Catholic District School Board**

**Holy Family Catholic School**  
**649 Murray St.**  
**Wallaceburg, Ontario**

**FDK Classroom and Washroom Renovations**

**Project No. 616-CP1834**

Prepared by:

**Wilson Diaz Architects Inc.**  
280 Queens Ave, Suite 1Q  
London, Ontario  
N6B 1X3

May 11<sup>th</sup>, 2018

*This addendum forms part of the Contract Bid Documents and amends the original drawings and specifications issued for Bid on April 19th. 2018*

**TABLE OF CONTENTS**

ADDENDUM # 2 (Including cover)	2 Page(s)
Attachments	
MECHANICAL/ELECTRICAL:	
Addendum No. 1 – Lighting Controls	1 Page(s)
Addendum No. 2 – Addition to drawing E201	2 Page(s)
Drawings:	0 Page(s)
Specifications:	0 Page(s)

TOTAL PAGE COUNT FOR THIS ADDENDUM	5 Page(s)
------------------------------------	-----------

**PART A – GENERAL**

Questions, comments and discussion from General Contractors:

No Questions at this time.

**PART B – SPECIFICATIONS**

RESERVED

**PART C – ARCHITECTURAL DRAWINGS**

RESERVED

**PART D – STRUCTURAL DRAWINGS**

RESERVED

**PART E – MECHANICAL / ELECTRICAL DRAWINGS & SPECIFICATIONS**

Refer to attached Addendum 001&002 issued by Chorley + Bisset, dated 05/08/2018

**Architectural Sketches Included**

RESERVED

**END OF ADDENDUM # 002**

Holy Family Renovations  
Wallaceburg, Ontario  
St. Clair Catholic District School Board

Chorley + Bisset Ltd.  
Consulting Engineers  
London, Ontario

8 May 2018

Page 1 of 1

### **ADDENDUM NO. 1**

Make the following amendments and additions to the Drawings, and include this cost in the Contract Price.

**1. ELECTRICAL SPECIFICATIONS**

**1. 16550 - Lighting Controls**

1. 2.2.9 and 2.4.13 - ADD Greengate as an equal manufacturer

**END OF ADDENDUM NO. 1**

Holy Family Renovations  
Wallaceburg, Ontario  
St. Clair Catholic District School Board

Chorley + Bisset Ltd.  
Consulting Engineers  
London, Ontario

11 May 2018

Page 1 of 1

## **ADDENDUM NO. 2**

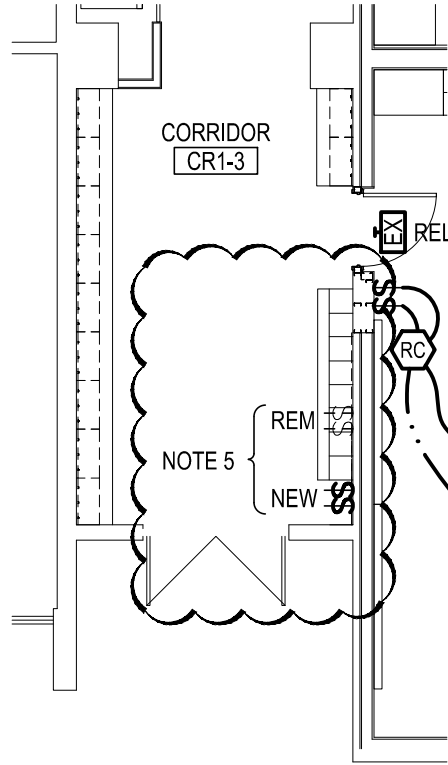
Make the following amendments and additions to the Drawings, and include this cost in the Contract Price.

### **1. ELECTRICAL DRAWINGS**

#### **1. Drawings E201**

1. Refer to attached Revision Drawings ER-1, attached.

**END OF ADDENDUM NO. 2**



## PART FLOOR PLAN - LIGHTING AND FIRE ALARM



SCALE: 1:100

### NOTES:

5. REMOVE EXISTING LIGHT SWITCHES TO ACCOMMODATE NEW CUBBIES. PROVIDE NEW SWITCHES. ALLOW FOR REWORK OF EXISTING LIGHTING CIRCUIT TO ACCOMMODATE NEW SWITCHING.

REVISION TO DRAWING E201

FILE NAME: 8461RE001.DWG  
 DATE SAVED: 10-May-2018 1:52 PM  
 DATE PLOTTED: 10-May-2018 1:59 PM



**Chorley + Bisset**  
 CONSULTING ENGINEERS  
 chorley.com

369 YORK ST., SUITE 2B 250 CITY CENTRE AVE., SUITE 403  
 LONDON ON, N6B 3R4 OTTAWA ON, K1R 6K7

Title	PART FLOOR PLANS ELECTRICAL REVISIONS		Drawn	TCH	Date	MAY 2018
	Project	HOLY FAMILY CATHOLIC SCHOOL WALLACEBURG SCCDSB	Checked	MFM	Project No.	8461
Approved			MFM	Drawing No.	ER-1	
Scale			1:100			